

# Vår erfarenhet av DAKEWE

Josefin Persson

Sara Issa

# Vem är vi?

- Sara Issa
  - Spec biomedicinsk analytiker
  - Teamledare
  - God erfarenhet inom labflödet.
- Josefin Persson
  - Enhetschef – Patologi Lund

# Mini fakta

- Ett av fyra orter
- 32000 prover
- Instrumentpark idag: VIP, Donatello, Logos, Logos JR and Pathos

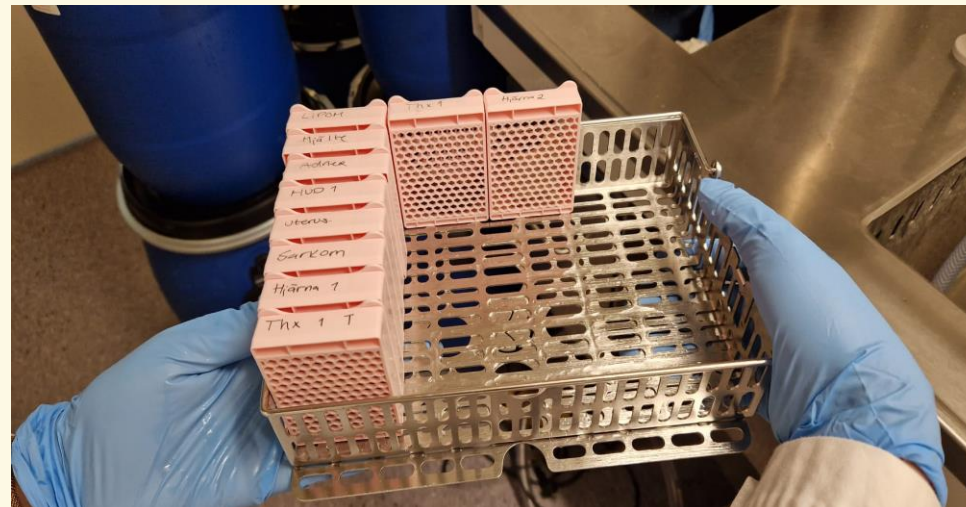
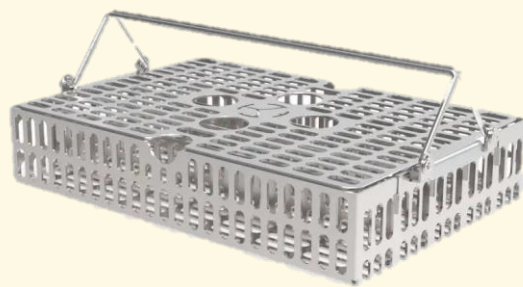
# Fördelar

- Enkel att använda
- Extra pump
- koncentration
- Information på startsidan
- Extra paraffintank
- RFID
- Rengöring
- Temporärt protokoll
- Åtkomst under körning
- Drain
- Säkerhetsreagens

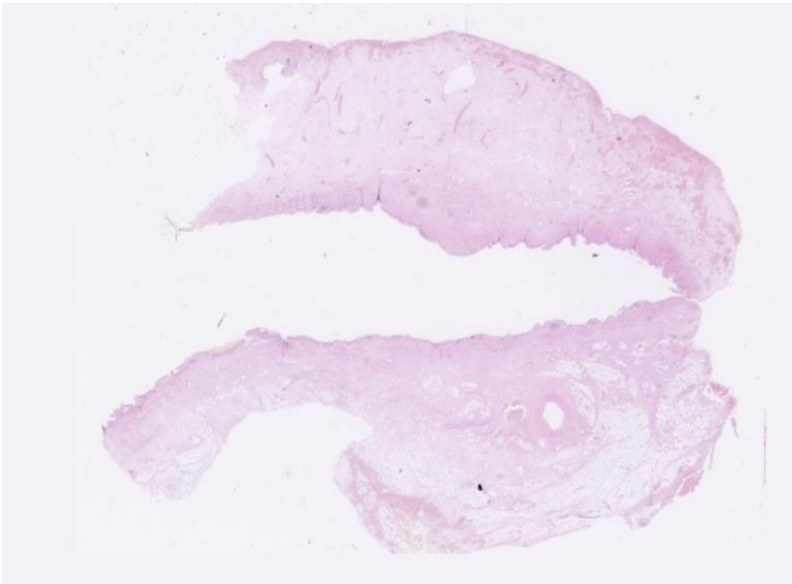
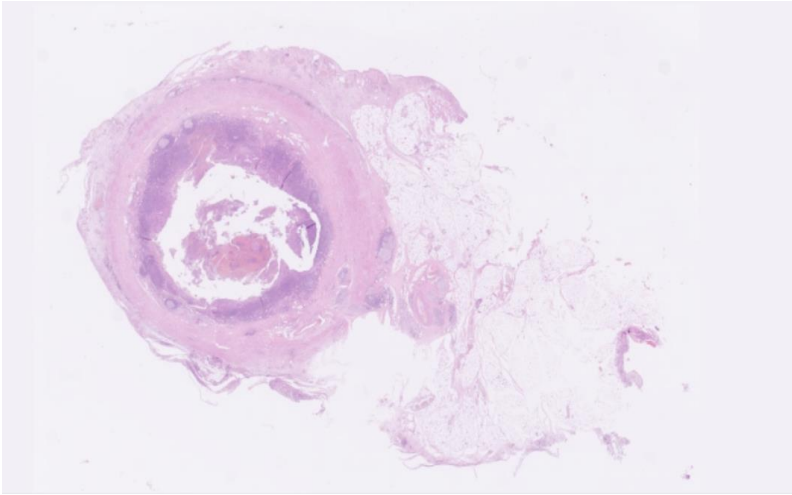


# Nackdelar

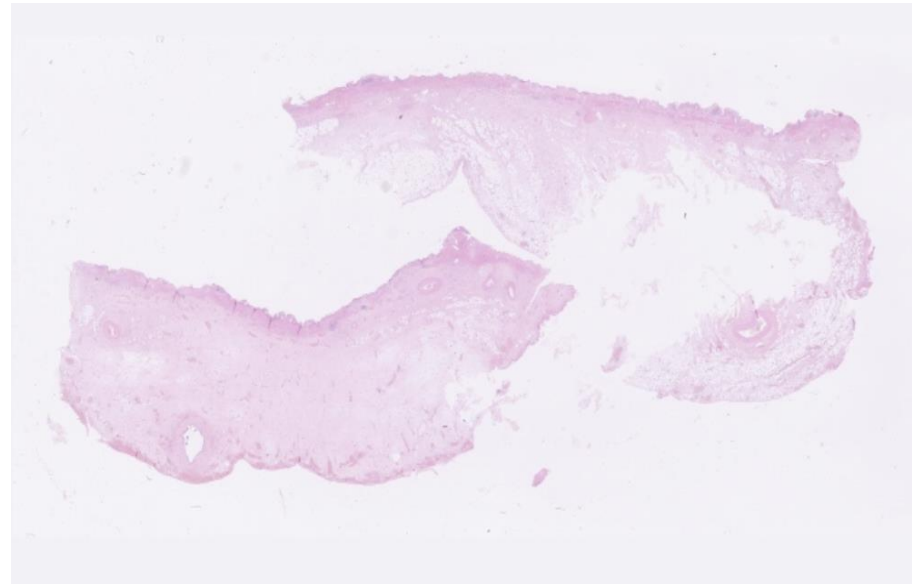
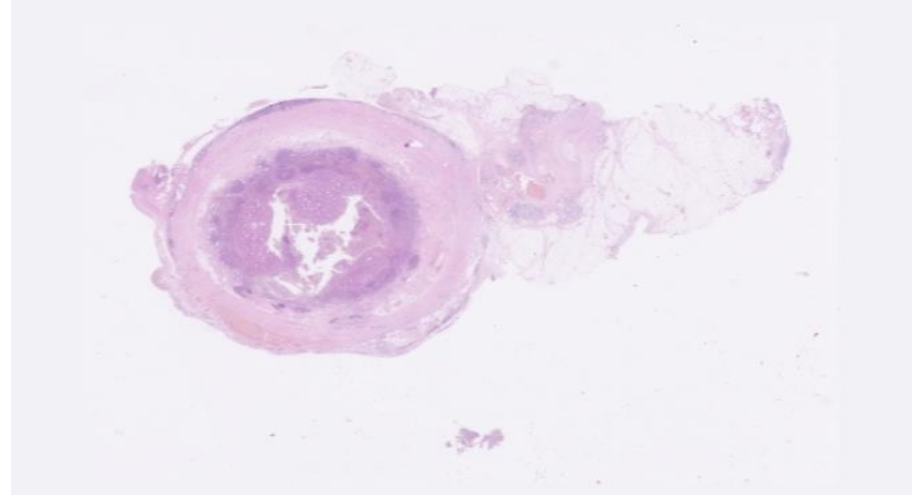
- Paraffin tanken
- Korg för supermega



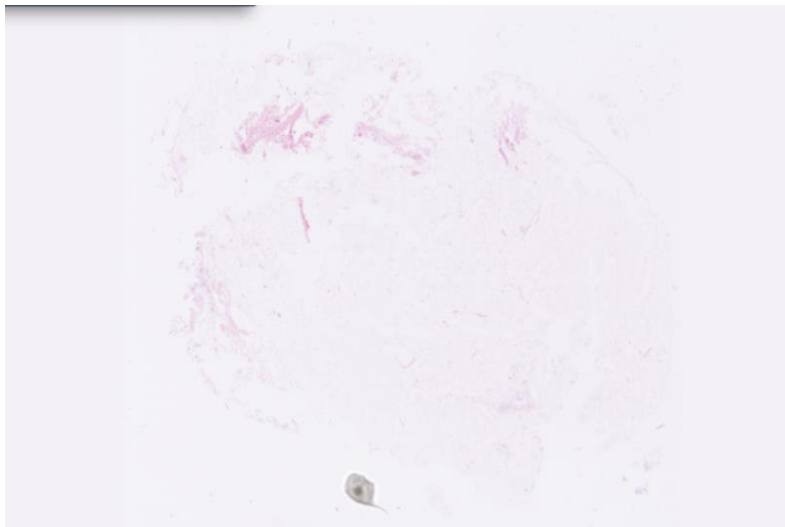
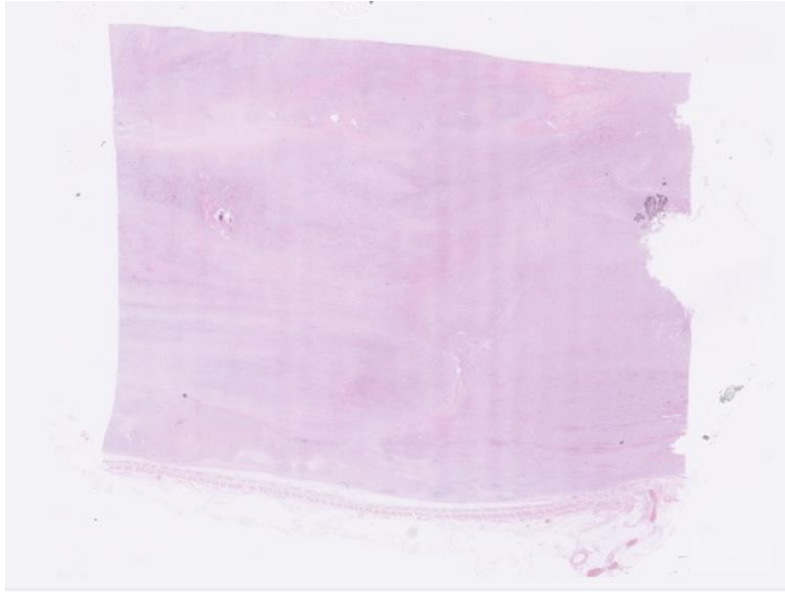
# DAKEWE



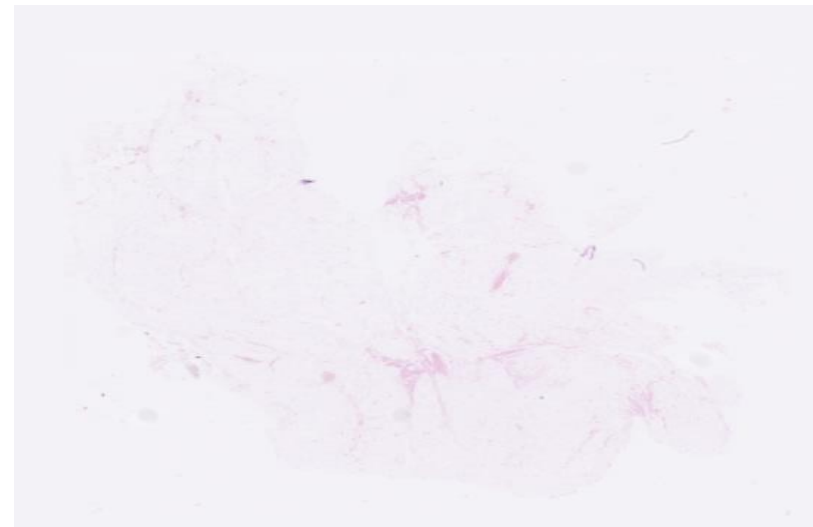
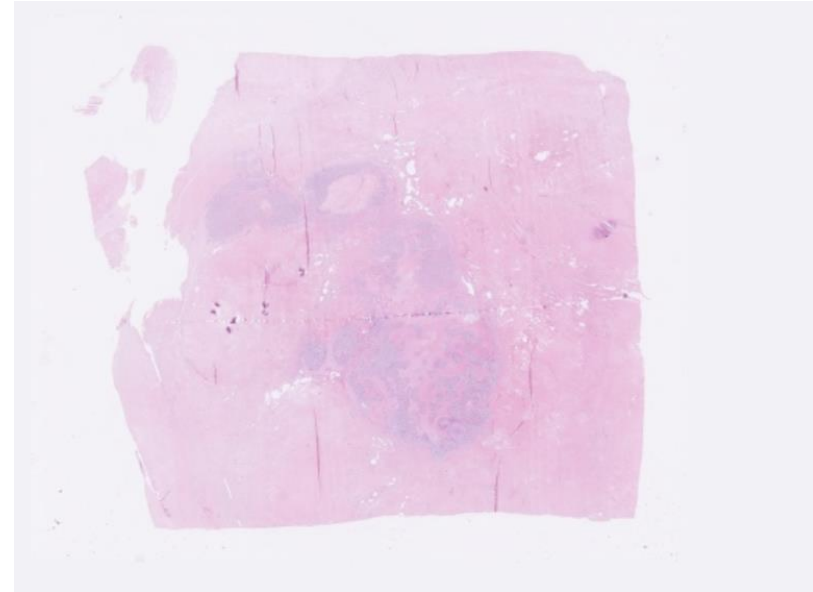
# VIP



# DAKEWE

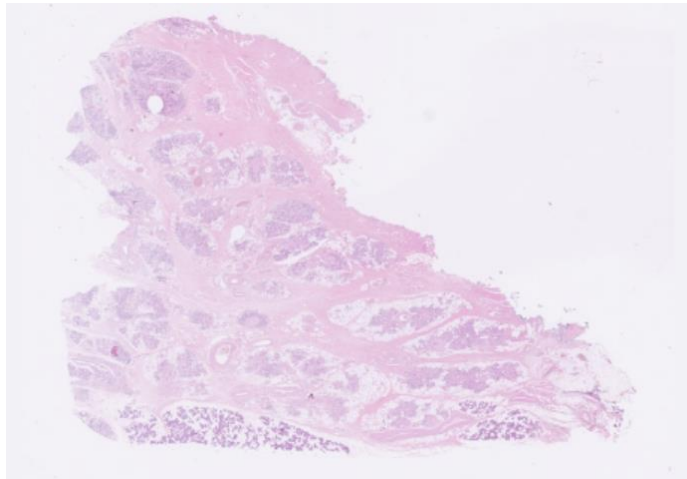
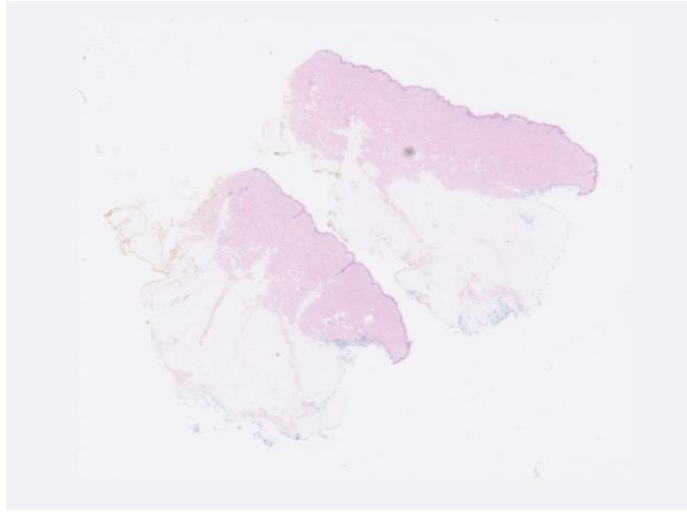


# VIP/PATHOS

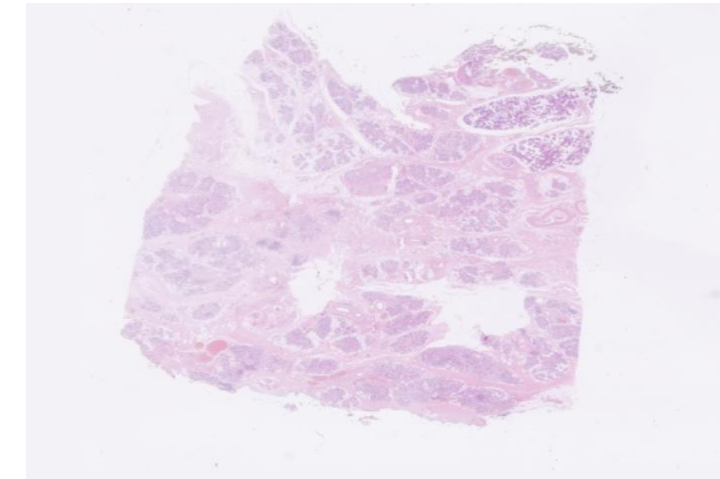
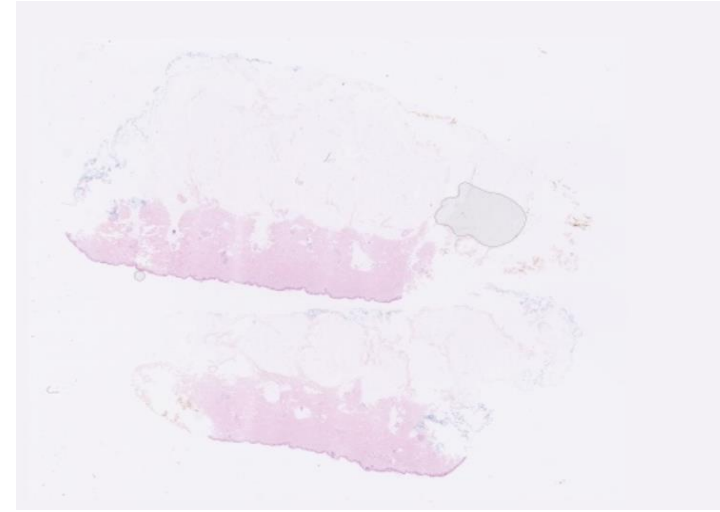




# DAKEWE

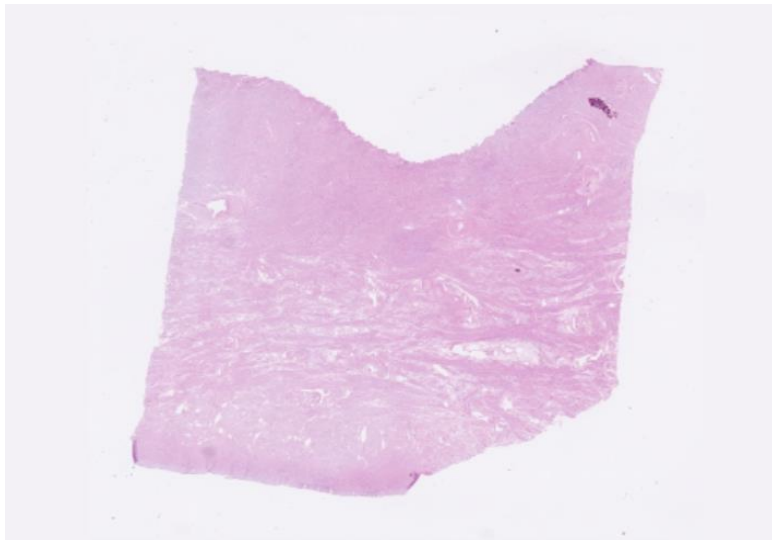
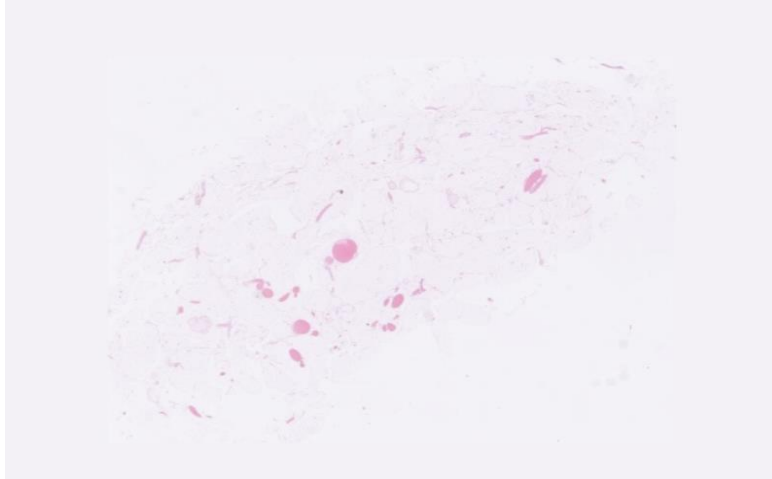


# VIP

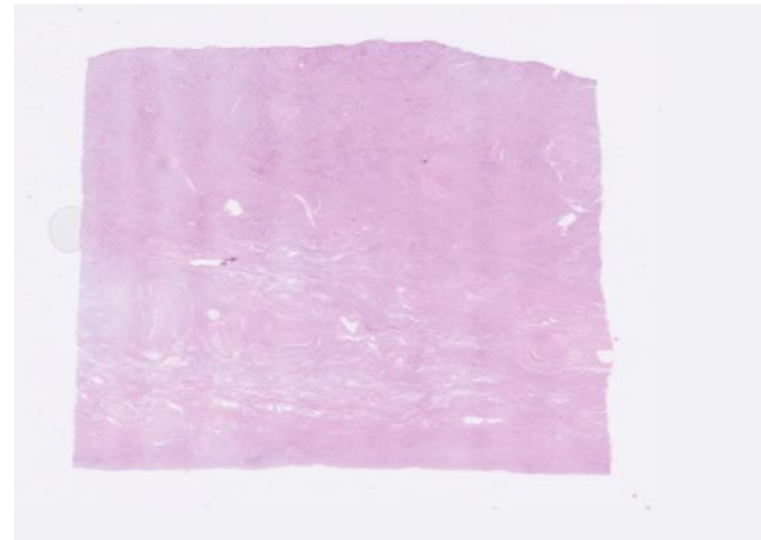
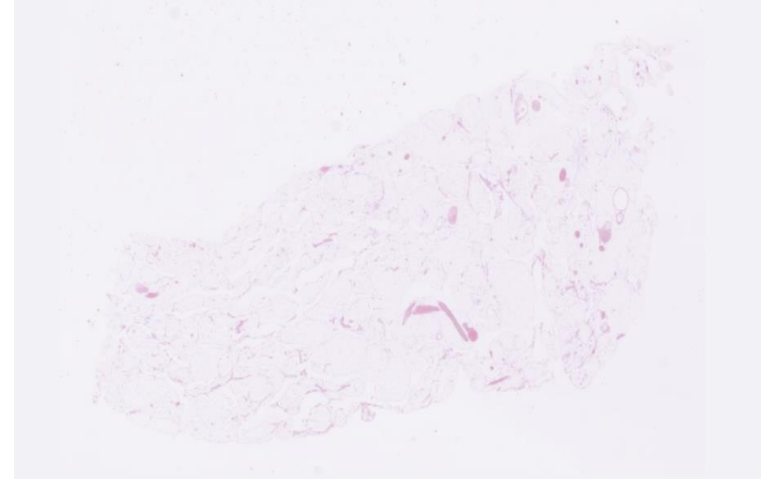




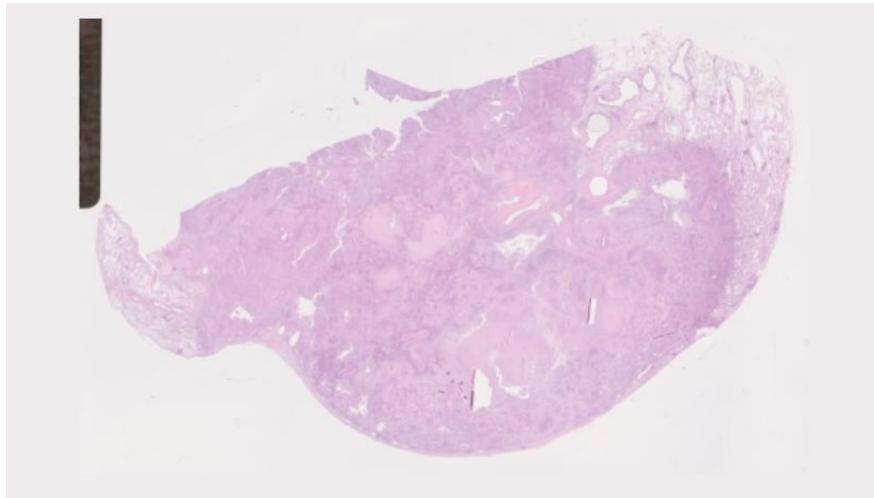
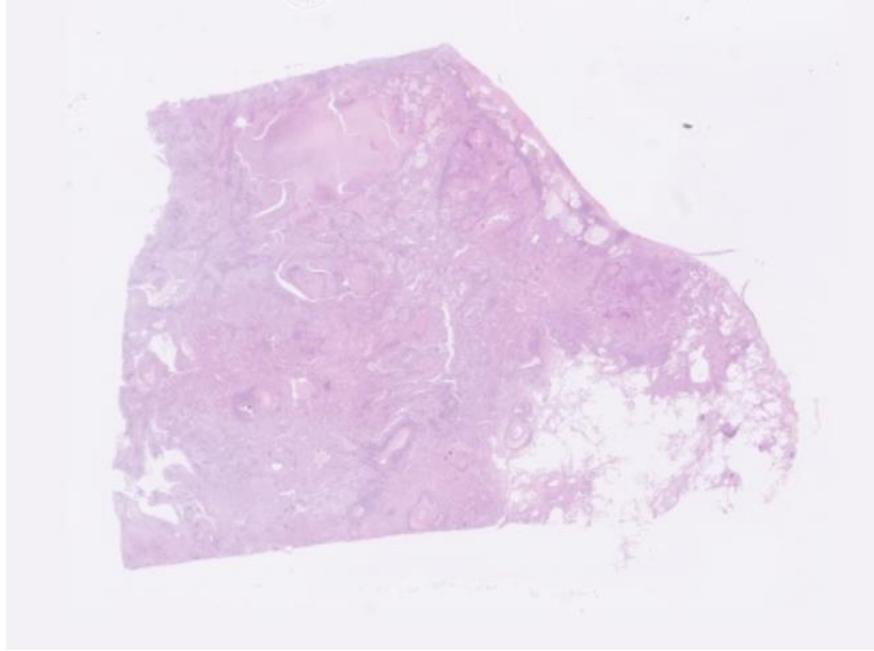
# DAKEWE



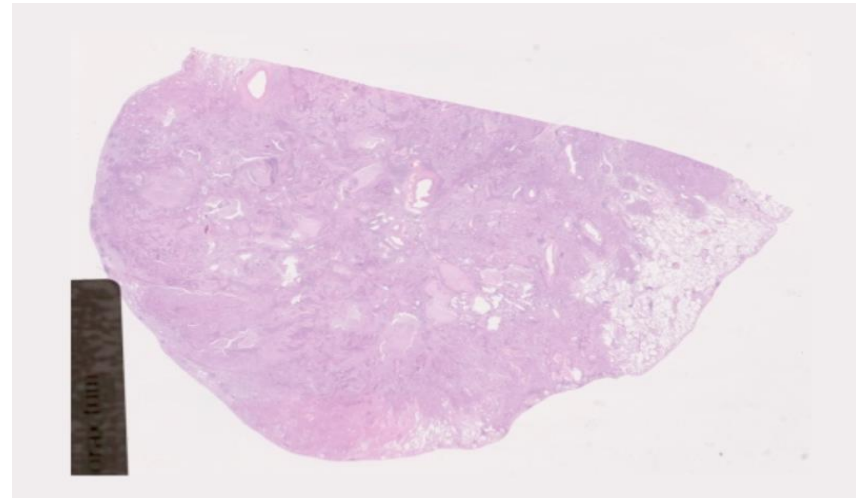
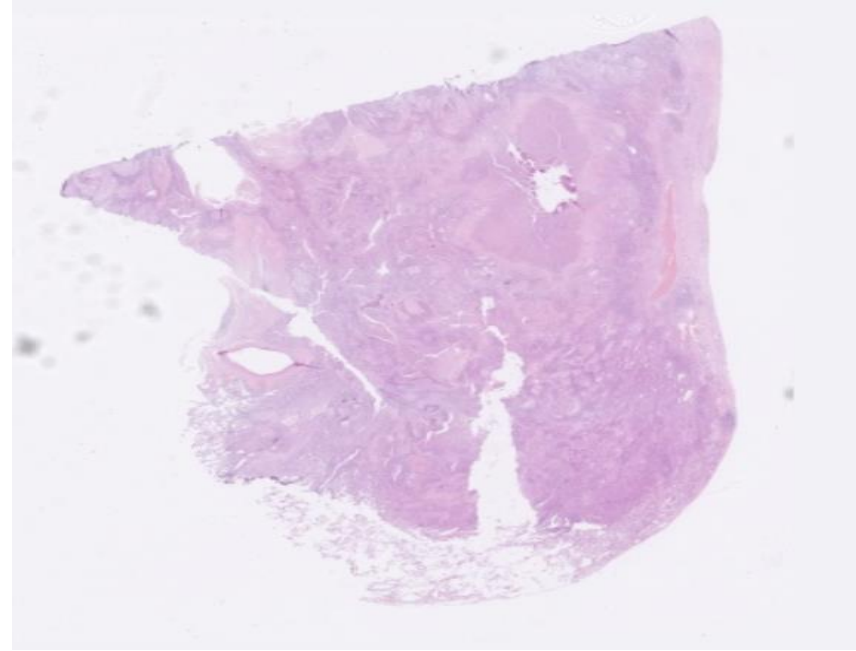
# VIP



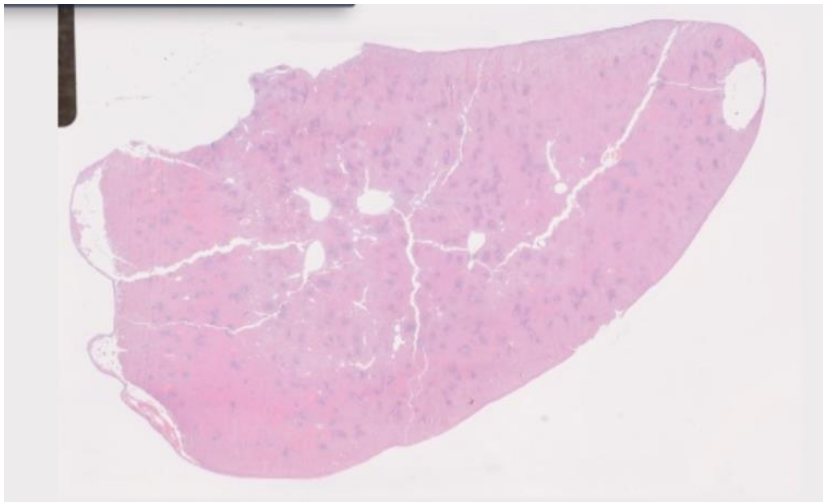
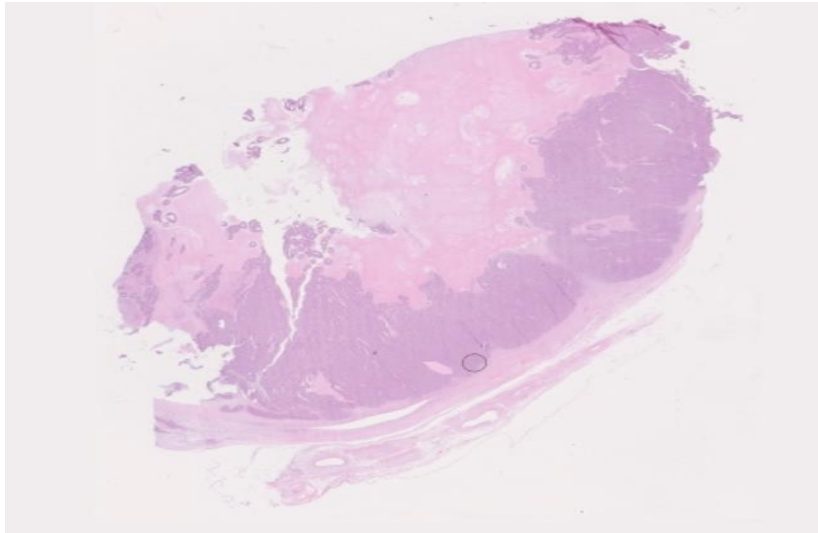
# DAKEWE



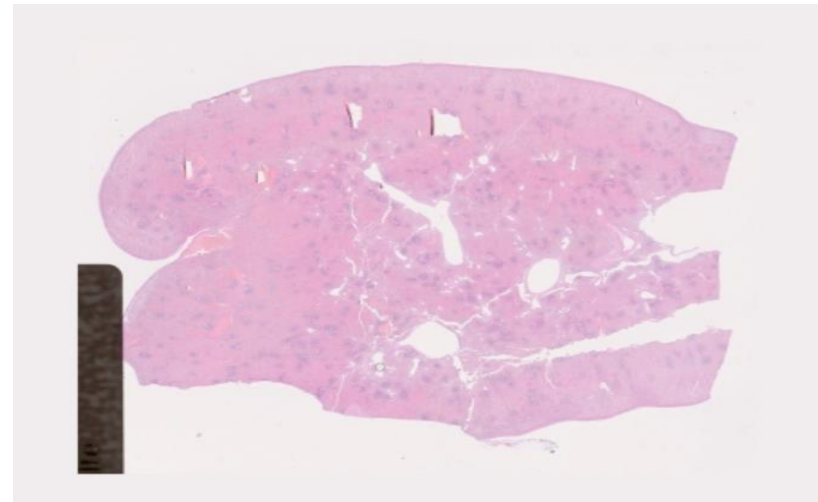
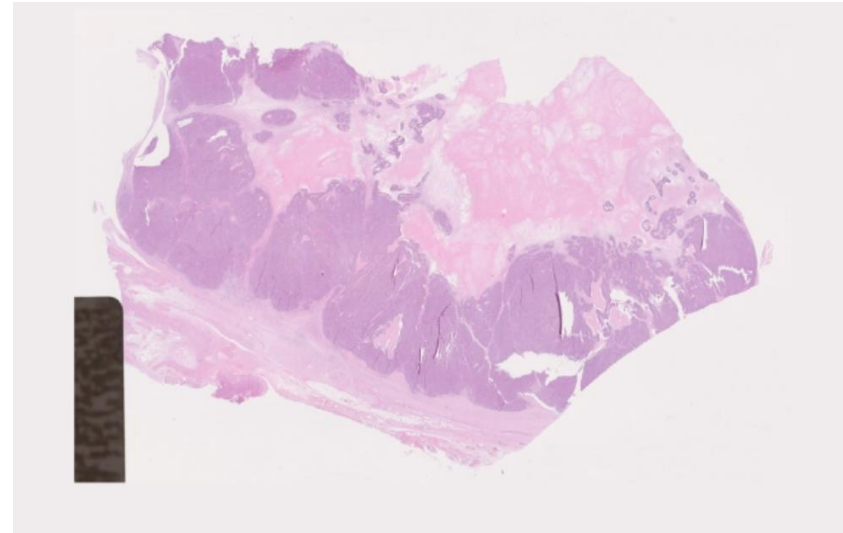
# VIP/DONATELLO



# DAKEWE



# DONATELLO



# DAKEWE



# DONATELLO



Tack för att ni lyssnat  
Frågor?