

HistoGel vs. Plasma-trombin til præparation af cytologiske celleblokke

Amal Sahif

Afdeling for Patologi, Rigshospitalet

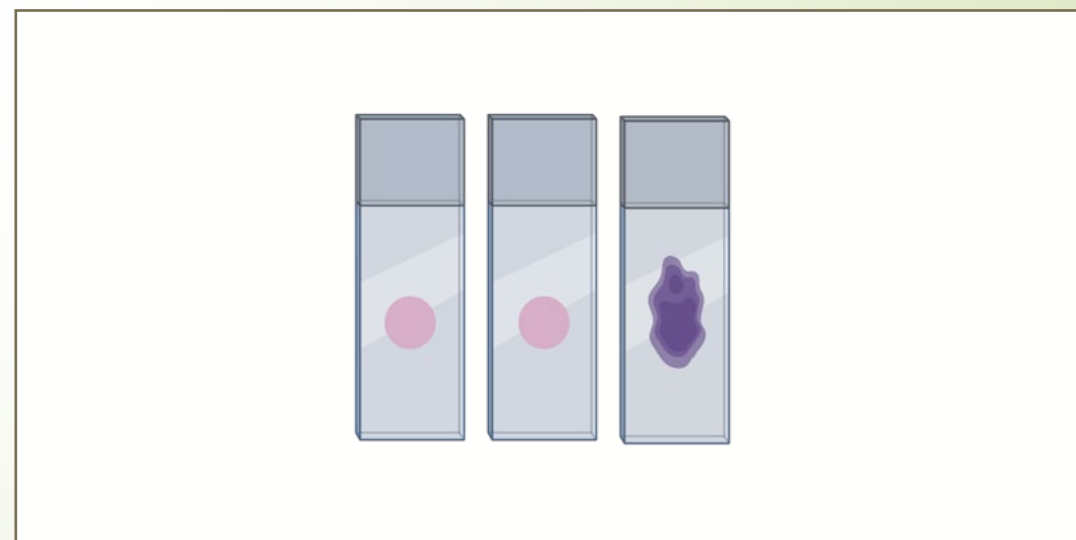
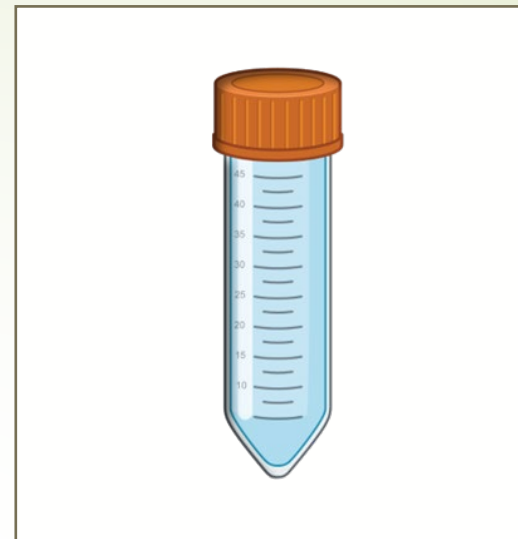


Agenda

- Præparation af cytologiske prøver med celleblokke
- Plasma-trombin metode og udfordringer
- HistoGel metode
- Resultater
- Fordele & ulemper
- Fremtidige planer

Præparation af cytologiske prøver med celleblokke

- Ascitesvæske
- Pleuravæske
- Perikardievæske
- Ledvæske
- Cystevæske
- Finnålsaspirat
- Diverse

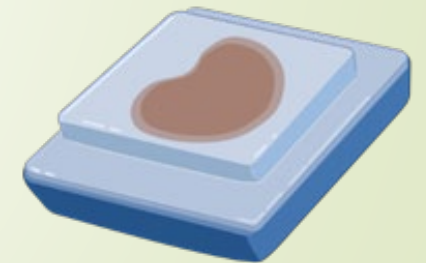


Hvorfor en celleblok er nødvendig?

Formalinfikserede celleblokke

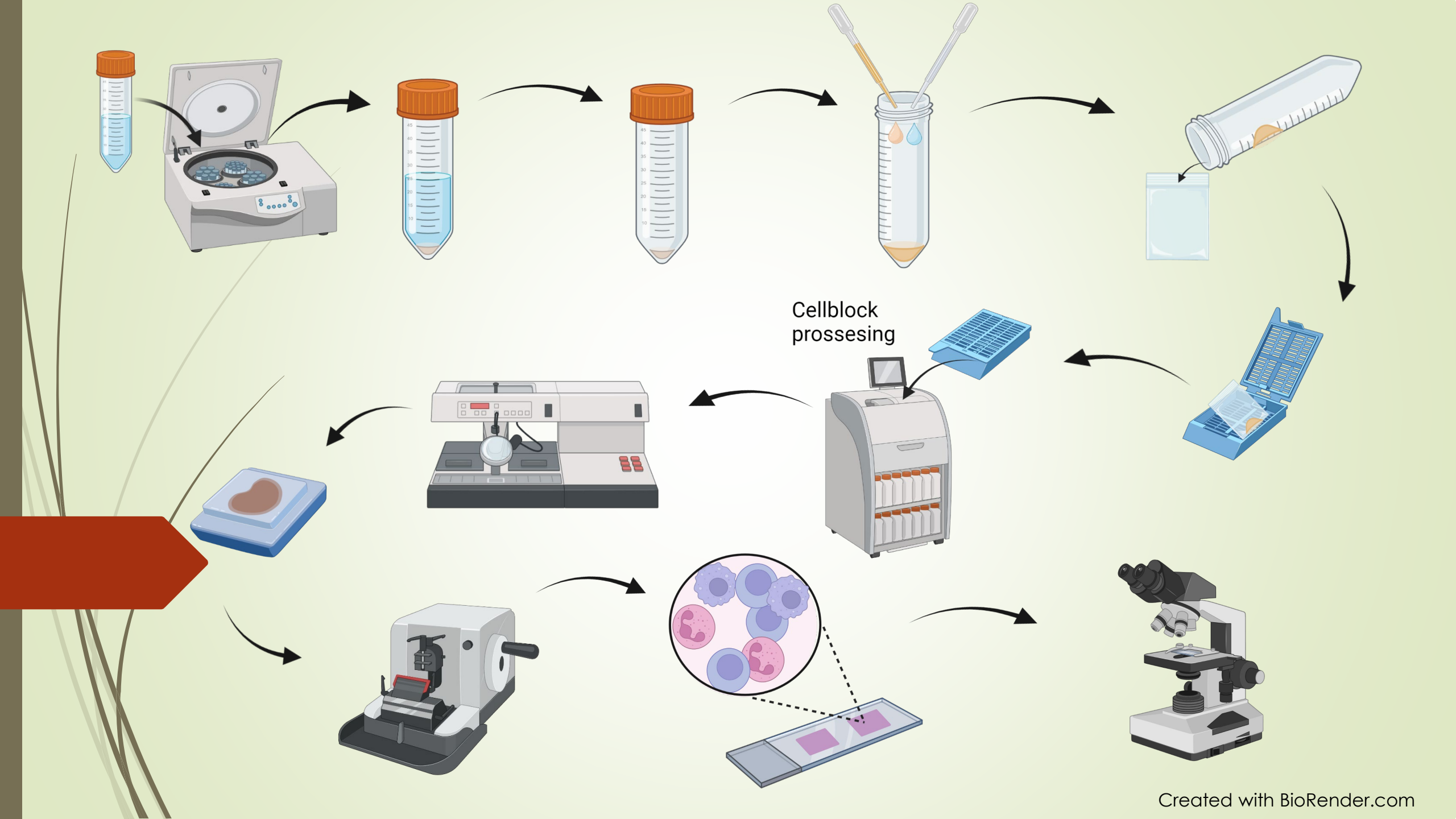
Materiale til supplerende undersøgelser

Samme immunhistokemiske protokoller





Plasma-trombin protokol



Cellblock processing

Udfordringer med plasma-trombin

Generelt

- Trombin er for dyrt
- Uegnet til enkelte prøvematerialer

Vævspræparering

- Risiko for kontaminering

Indstøbning

- Risiko for kontaminering
- Tidskrævende
- Vanskelig orientering
- Tab af prøvemateriale

Mikrotomi

- Vanskelig
- Tidskrævende
- Dårlig snitkvalitet
- Risiko for at miste materiale



Er der noget bedre?



HistoGel

Lovende resultater fra et
bachelorprojekt

Pilotprojekt 1

Prøvemateriale

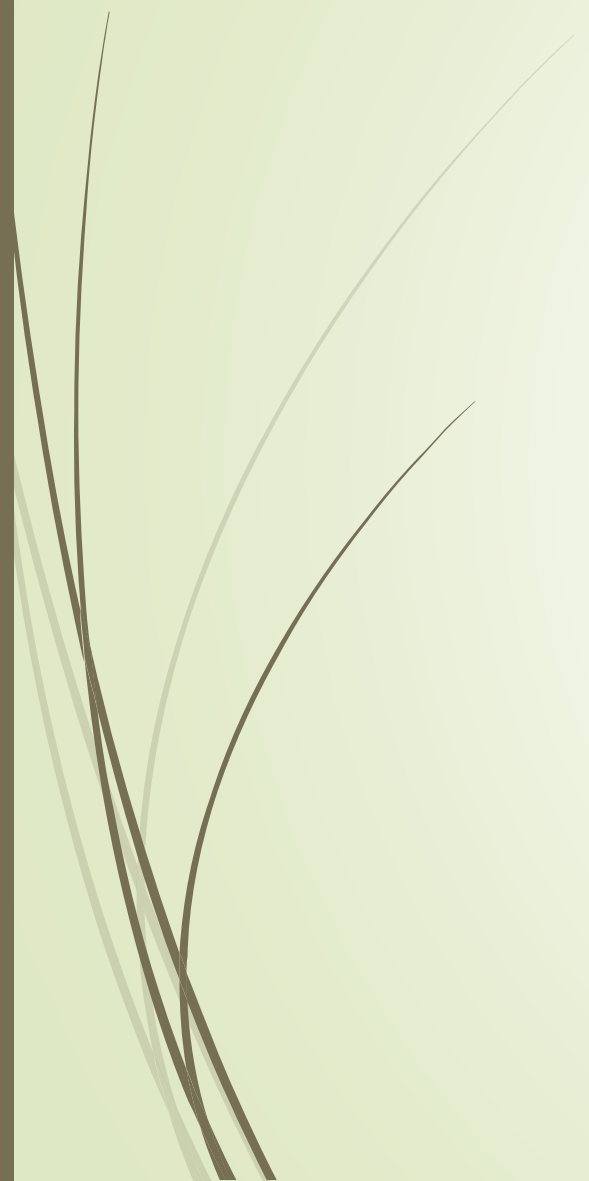
- 40 pleuravæsker

Fokusområder

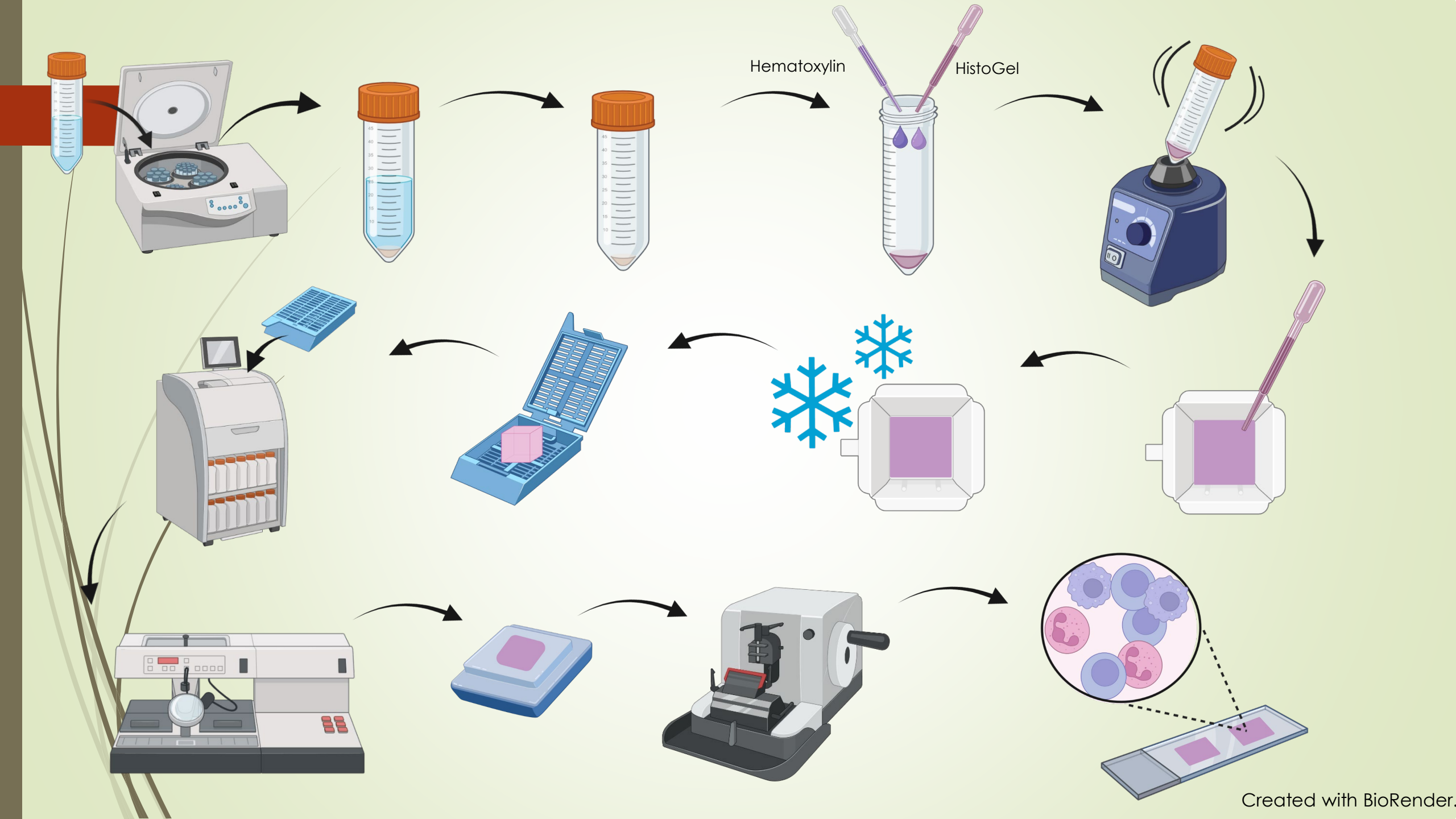
- Celle morfologi
- HE farvning
- Celletæthed
- Baggrund / debris


Supplerende analyser

- Histokemiske analyser
- Immunhistokemiske analyser
- Molekylær analyser



HistoGel protokol





Pilotprojekt 1- Resultater



- Immunhistokemiske analyser
- Molekykær analyser
- Baggrund / debris



- Cellemorfologi
- Celletæthed
- HE farvning



Hvad gik der galt?



Pilotprojekt 2

Prøvemateriale

- 40 pleuravæsker

Fokusområder

- Cellemorfologi
- HE farvning
- Celletæthed
- Baggrund / debris

Supplerende analyser

- Histokemiske analyser
- Immunhistokemiske analyser
- Molekylære analyser



Piloptprojekt 2 - Resultater

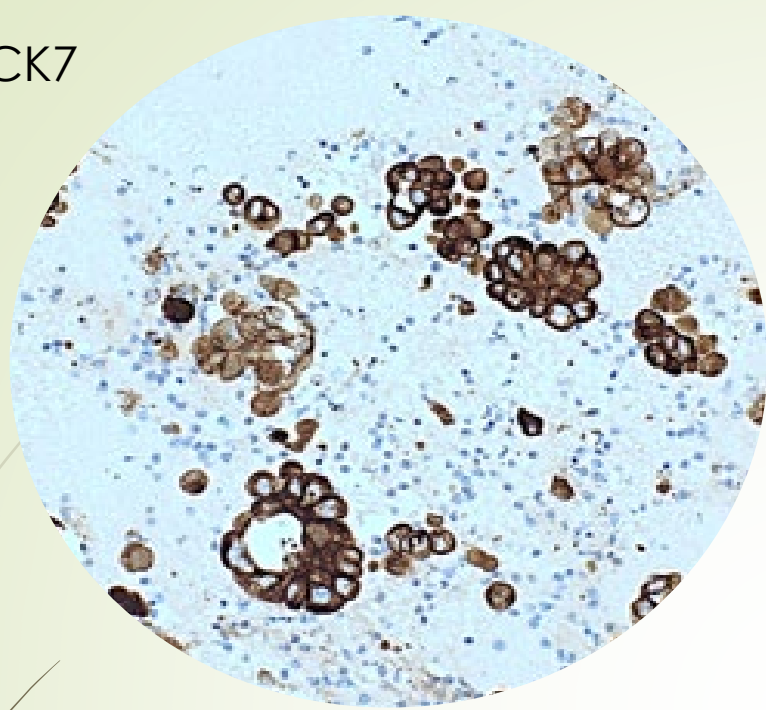


- Immunhistokemiske analyser
- Molekykære analyser
- Baggrund / debris

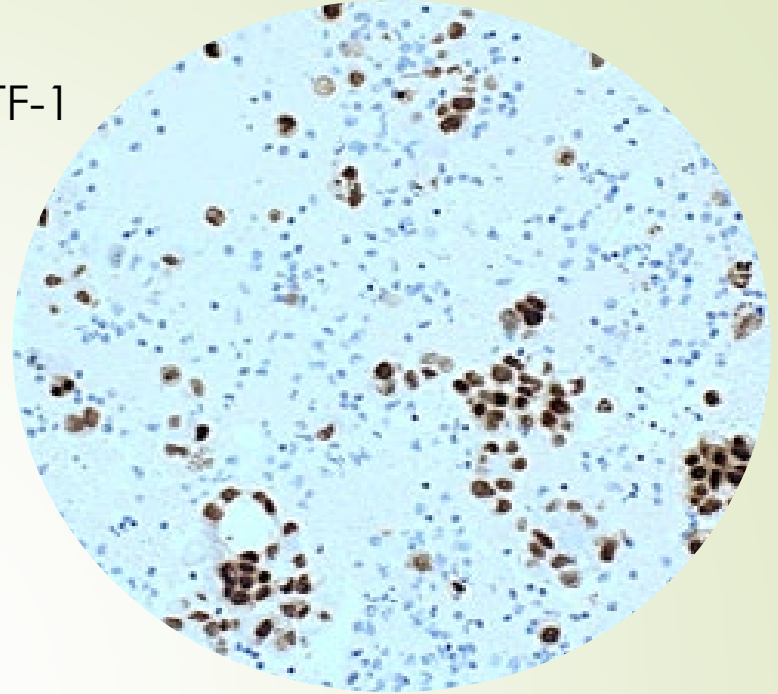
Acceptabel

- Cellemorfologi
- Celletæthed
- HE farvning

CK7

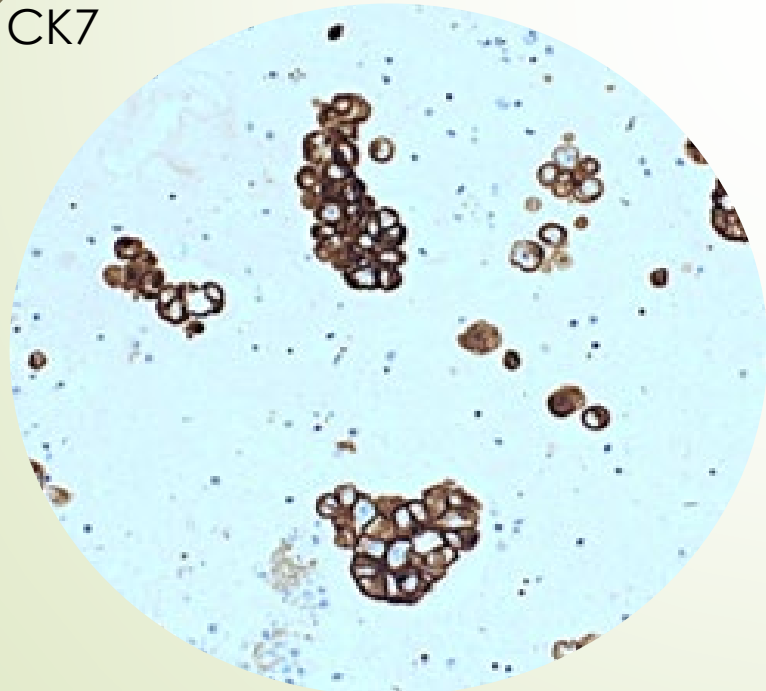


TTF-1

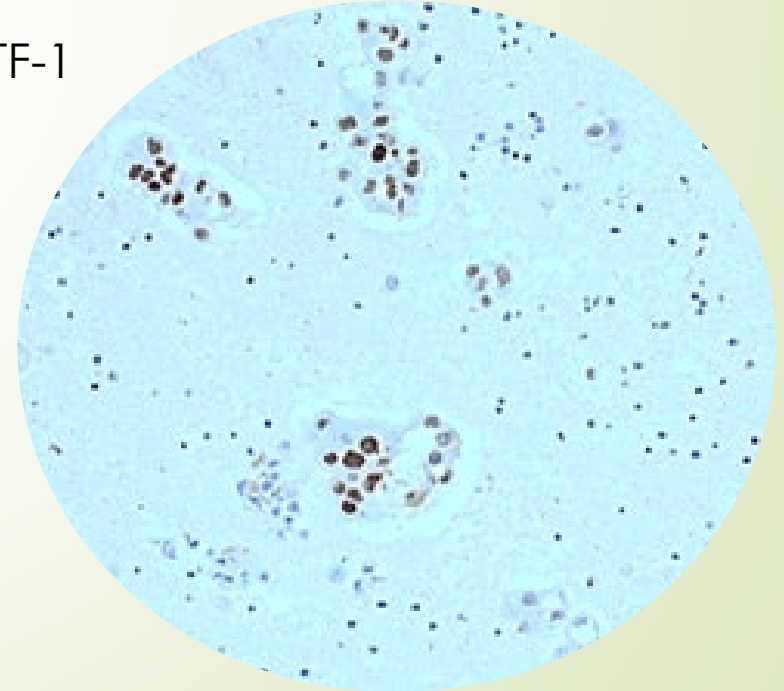


Plasma/
Thrombin

CK7



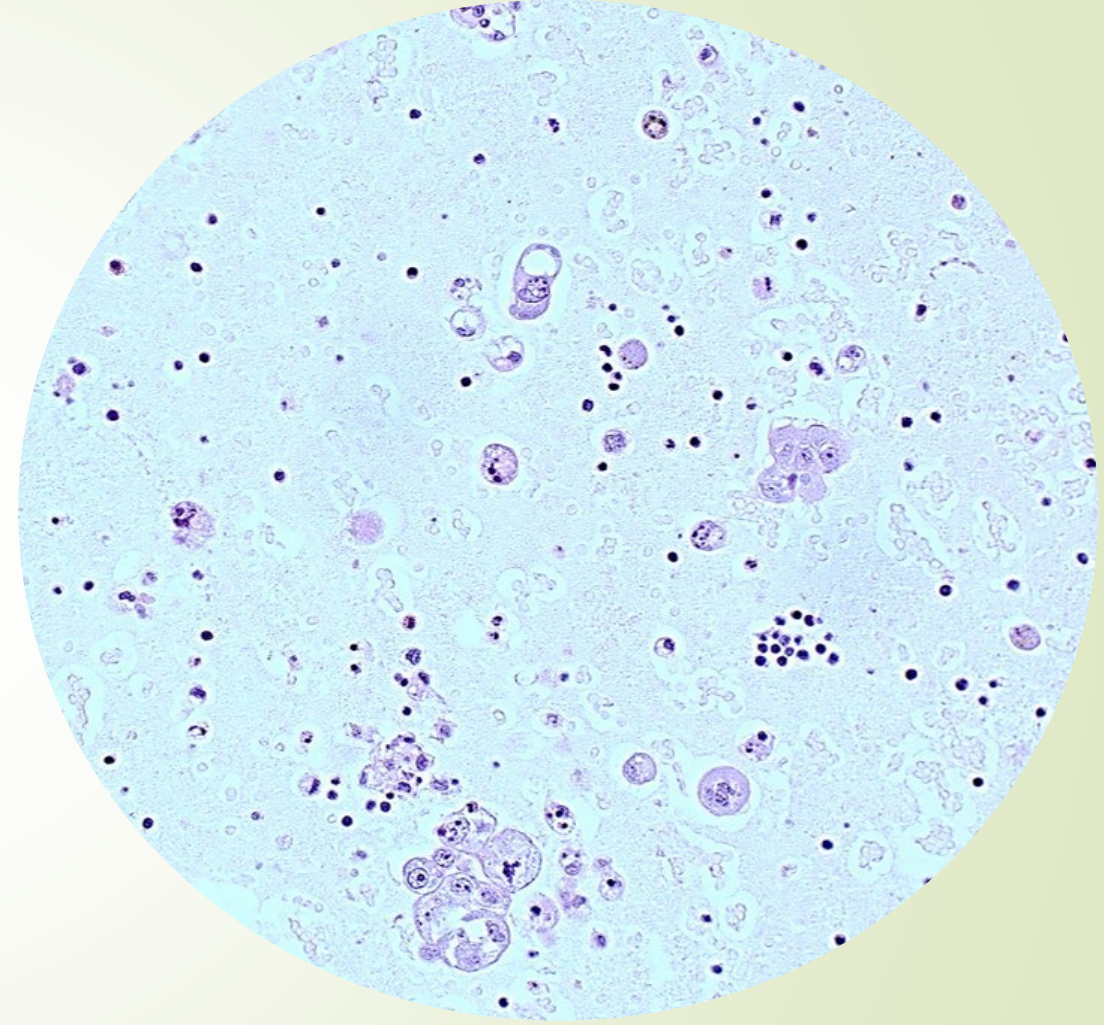
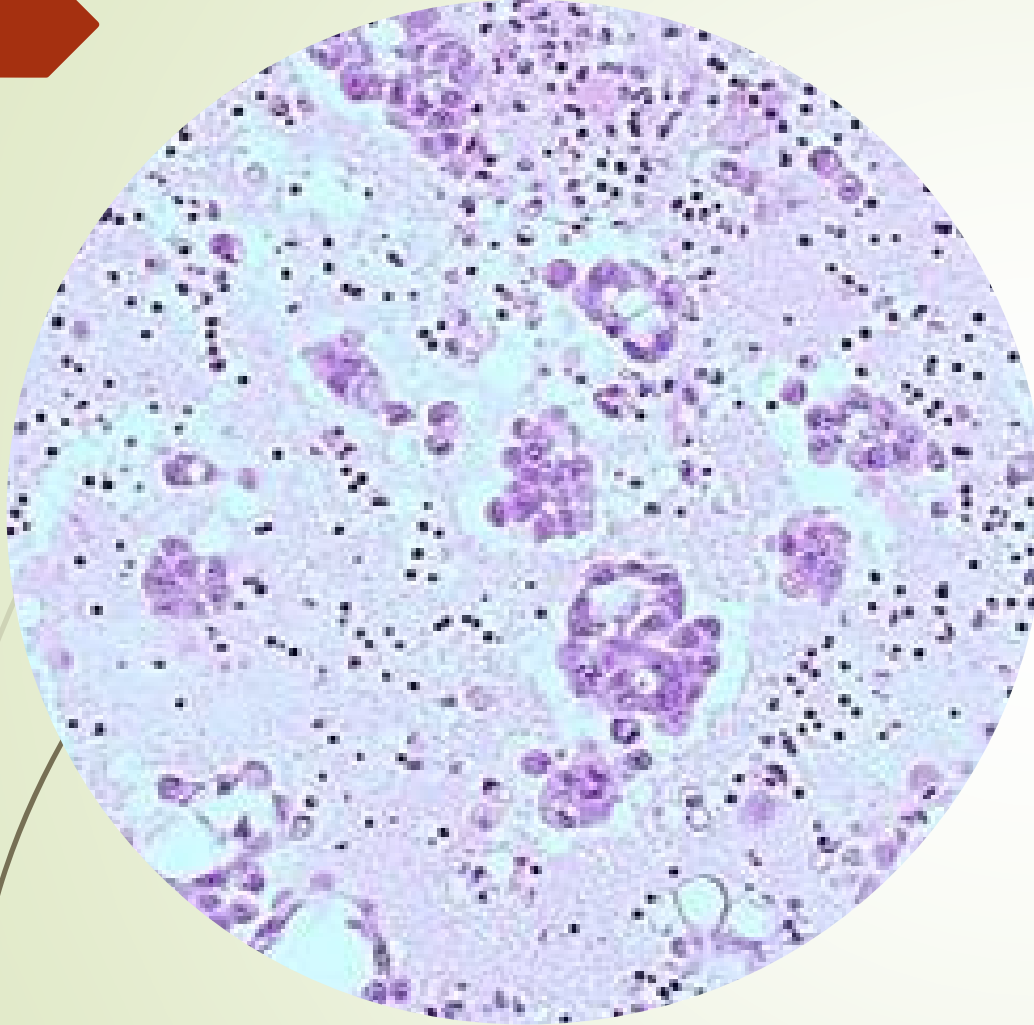
TTF-1



HistoGel

Plasma- trombin

HistoGel



HE-
farvning

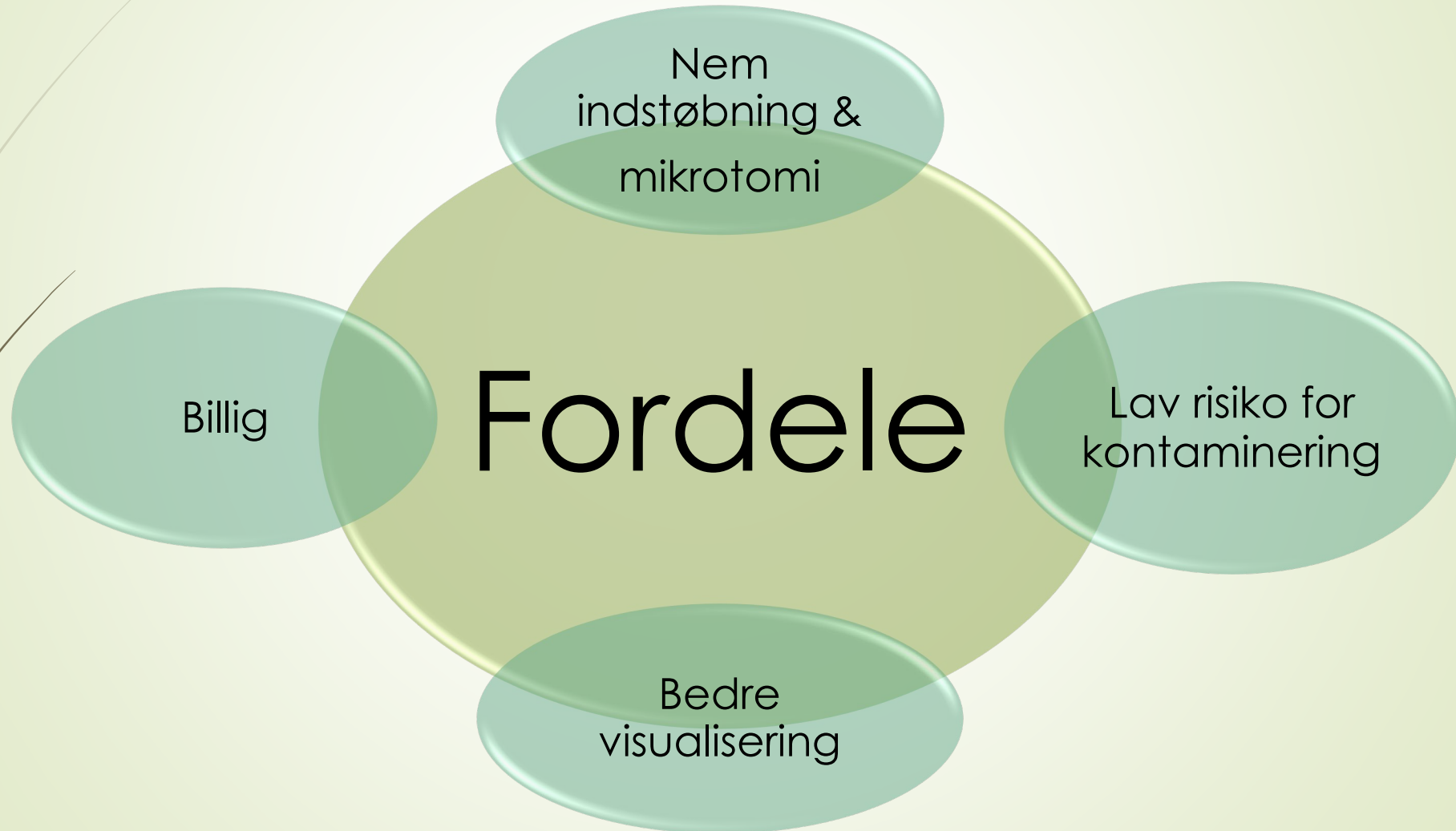
Celltæthed

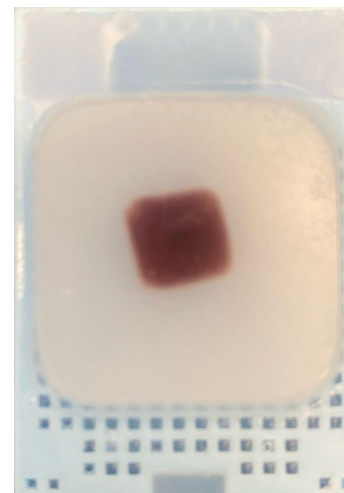
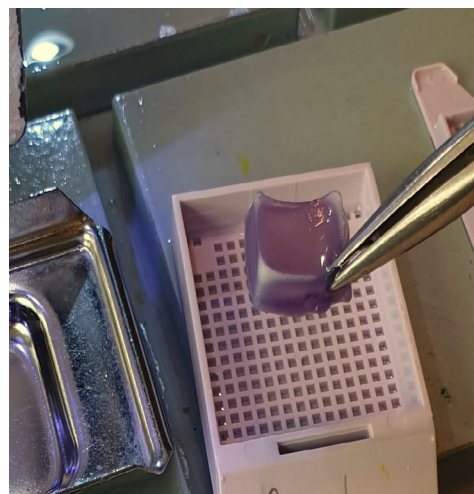
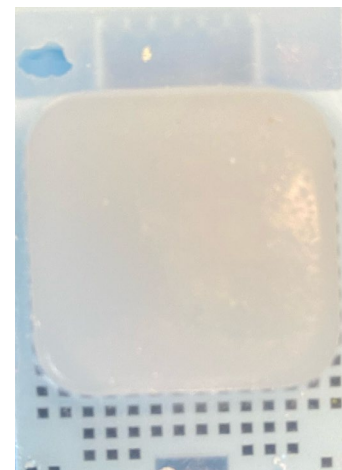
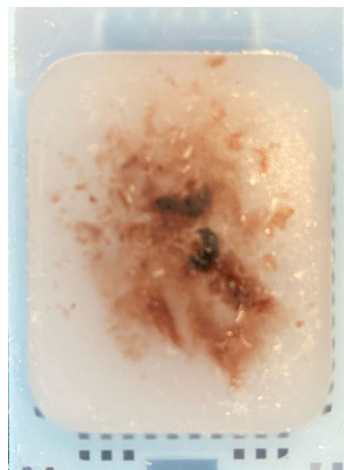
Cellmorfologi

Baggrund/
debris



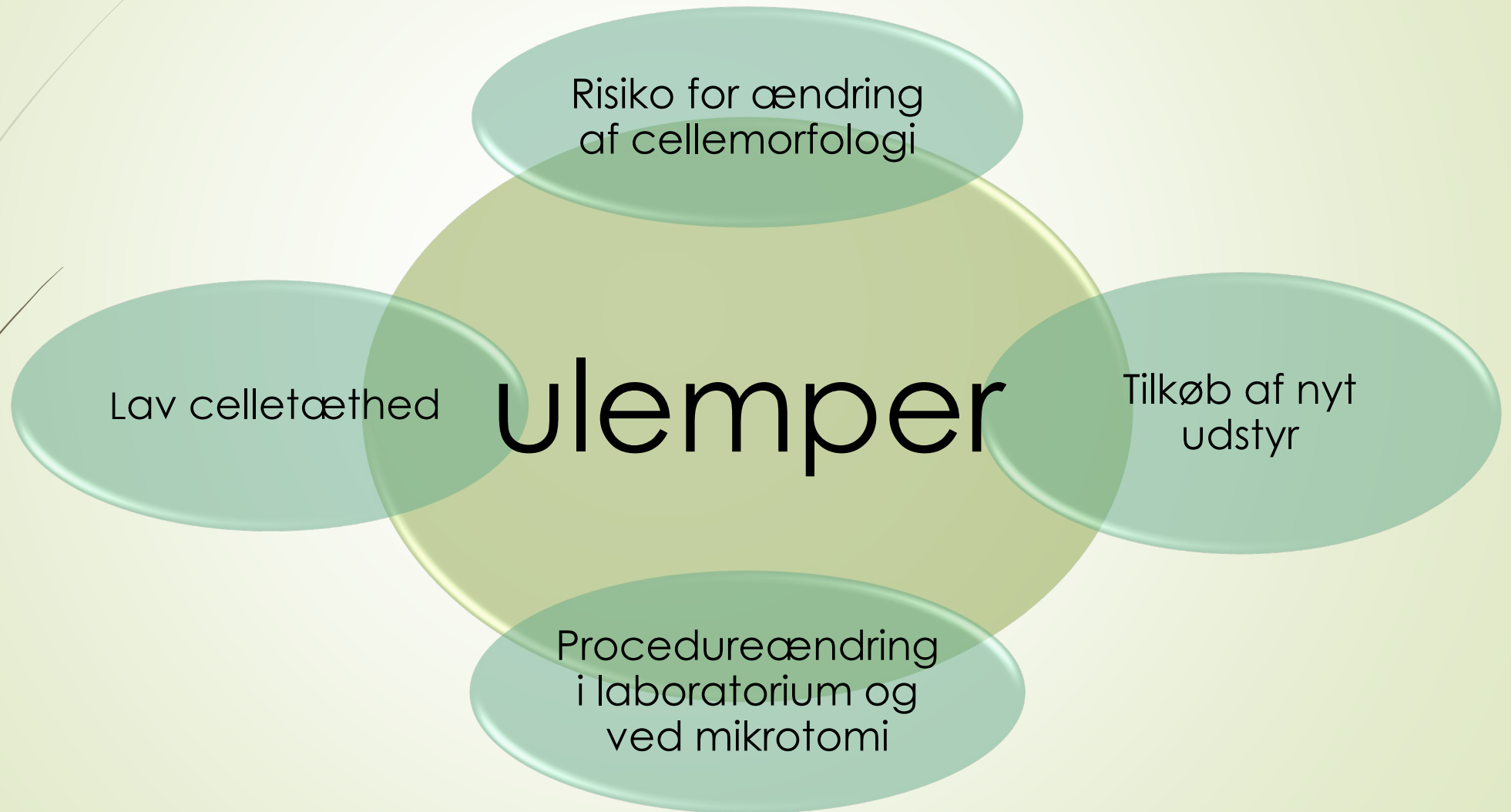
Fordele







Ulemper





Kan vi bruge HistoGel?

Desværre ikke endnumen





Fremtidige planer



Pilotprojekt
3



Nye
justeringer



Marie Krebs Eriksen
Bioanalytiker

Camilla Christine Qvist
Bioanalytikerunderviser

Sara Bird Rørvig
Overlæge

Elvira Bijelic
Superbruger AS410

Tak til

Thomas Hartvig Lindkær Jensen
Overlæge

Unni Nielsen
Fagansvarlig bioanalytiker
Mikroskopi

Filis Necip
Bioanalytikerunderviser

Spørgsmål

