

# Our experience from DAKEWE

Josefin Persson

Sara Issa

# Who are we?

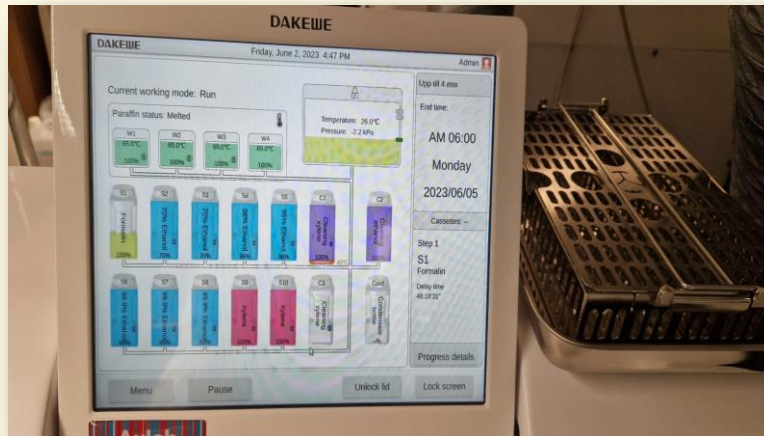
- Sara Issa
  - Technician
  - Long experience of the workflow
  - Teamleader
- Josefin Persson
  - Labmanager - pathology lab in Lund

# Mini fact

- One of four sites in Skåne
- 32000 request
- Instruments today: VIP, Donatello, Logos, Logos JR and Pathos

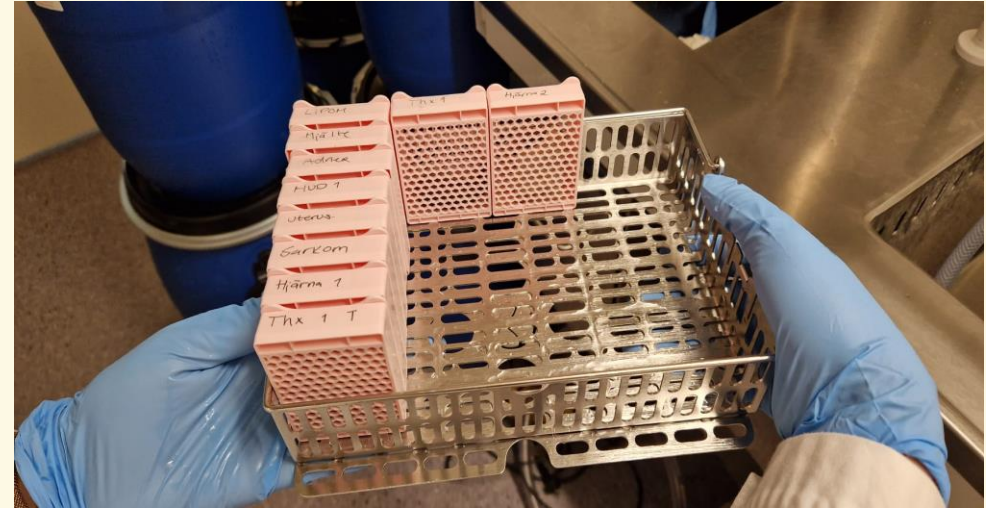
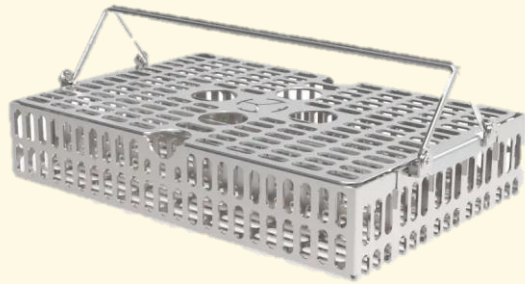
# Advantages

- Easy to use
- Extra pump
- Concentration
- Main screen – information
- Extra paraffin
- RFID
- Cleaning – embedding
- Temporarily protocol
- Access the machine during run
- Drain
- Secure reagents

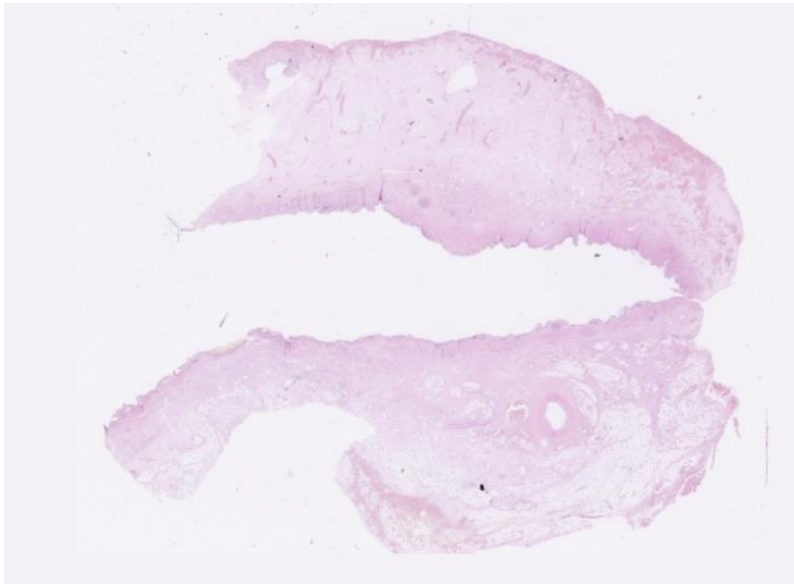
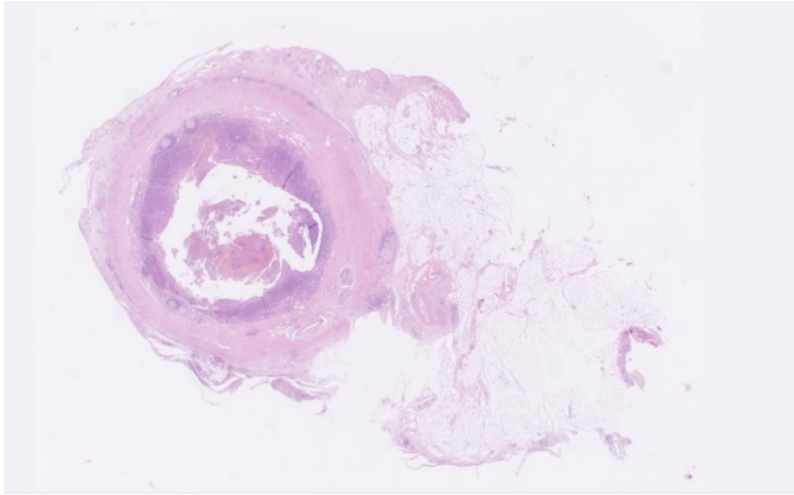


# Disadvantages

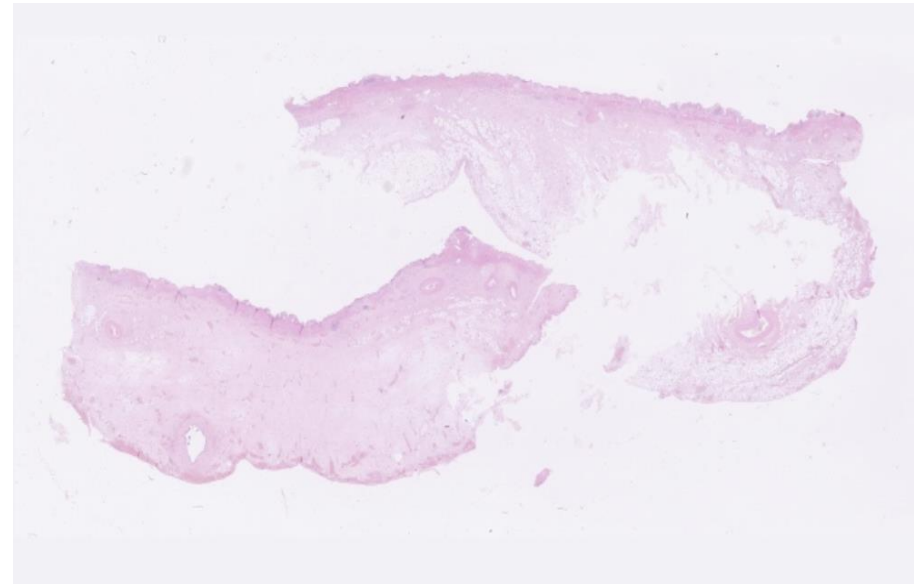
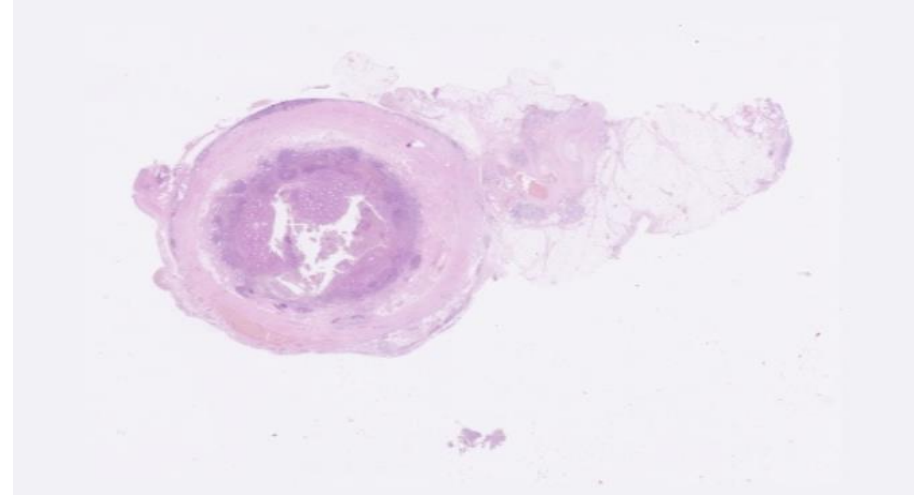
- Paraffin tanks
- Basket for SM



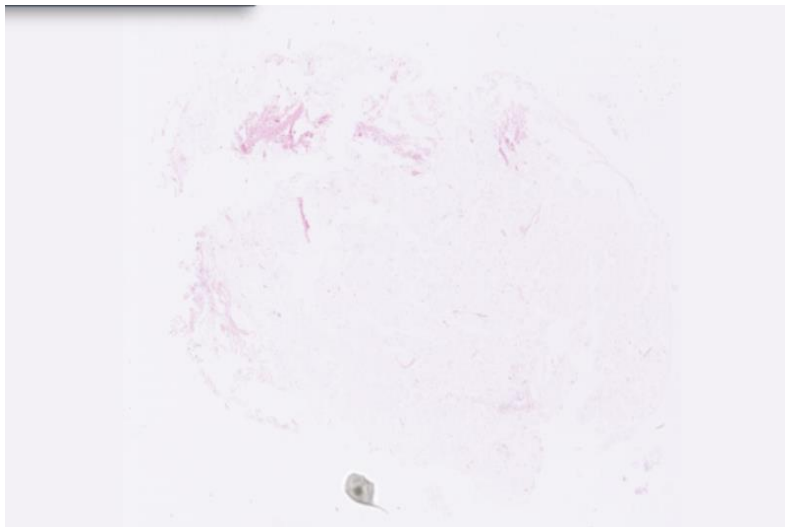
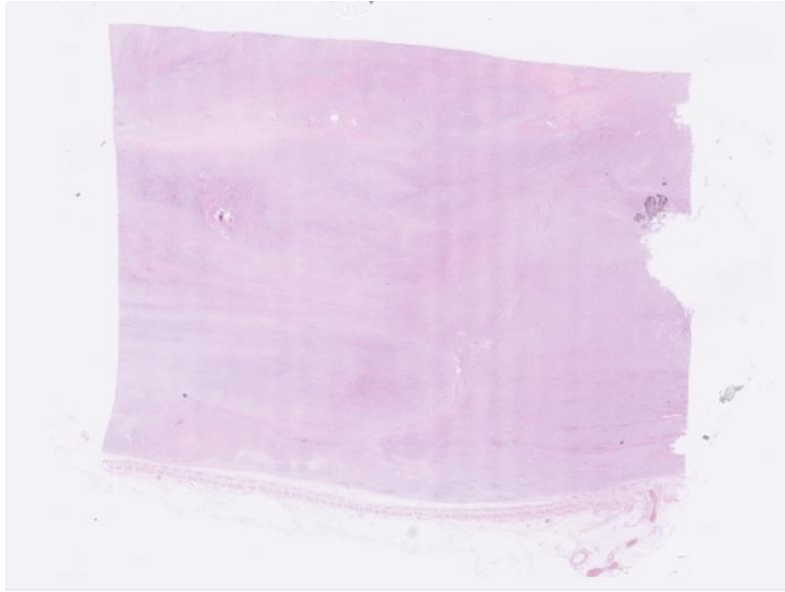
# DAKEWE



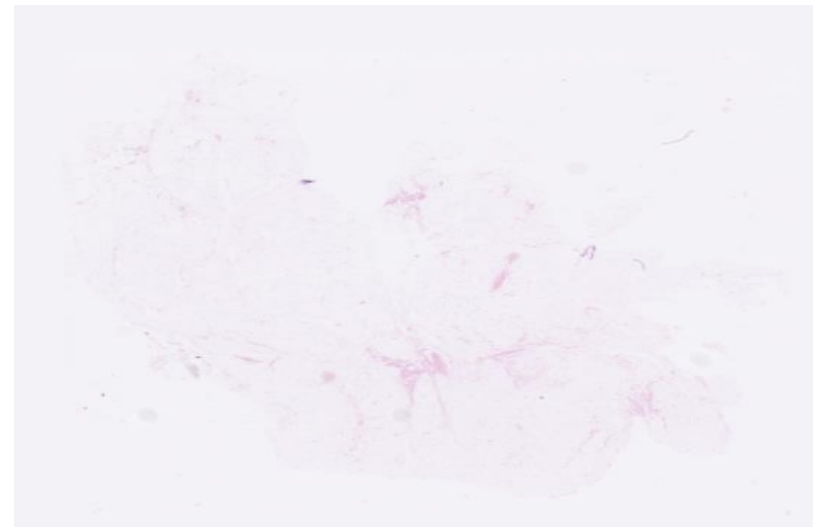
# VIP



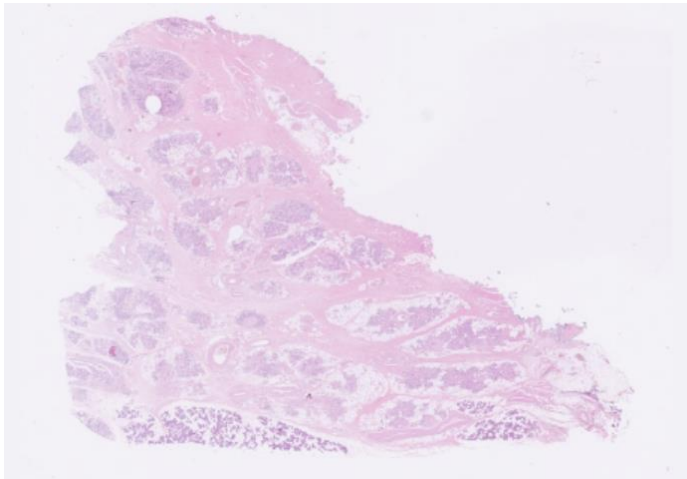
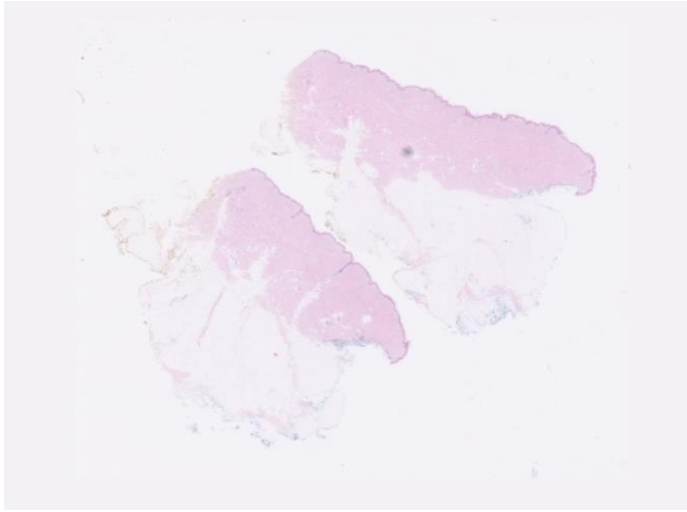
# DAKEWE



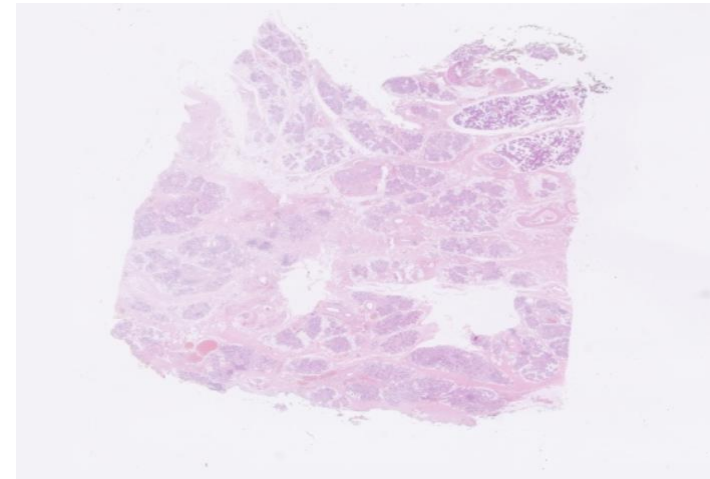
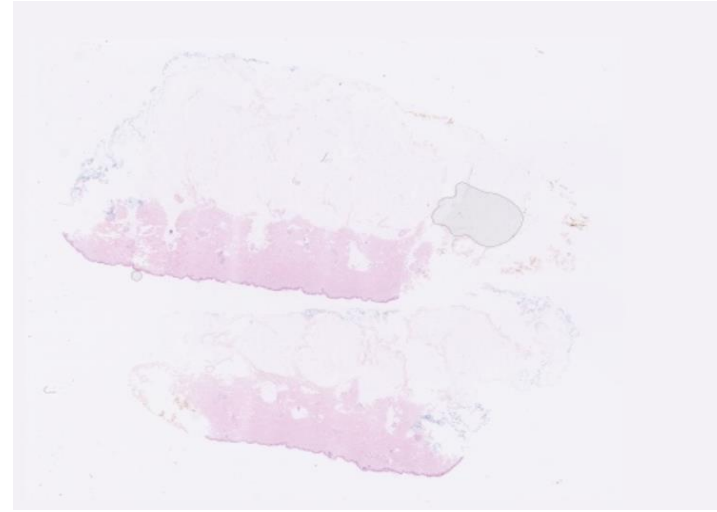
# VIP/PATHOS



# DAKEWE

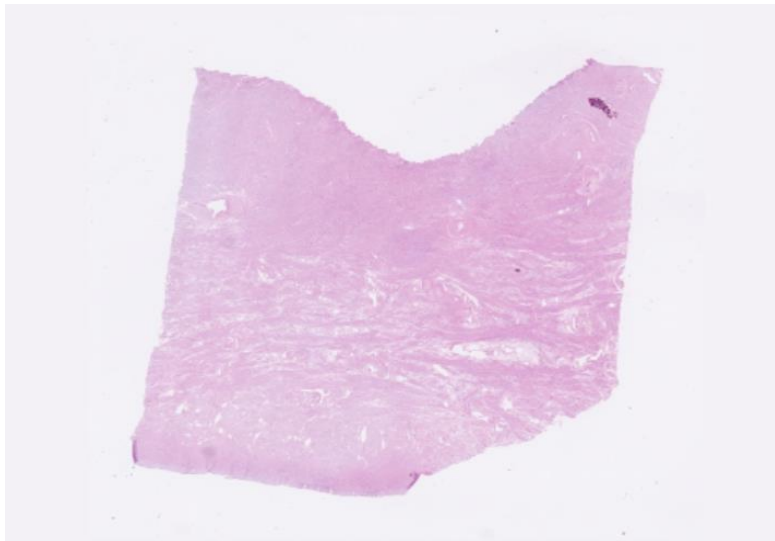
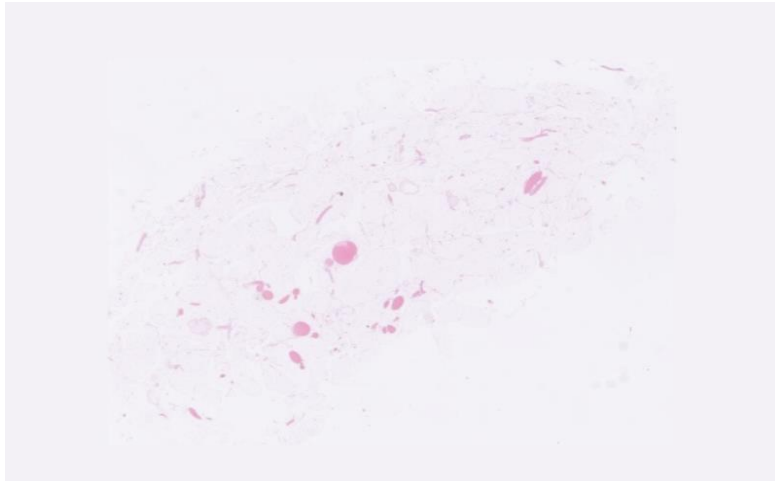


# VIP

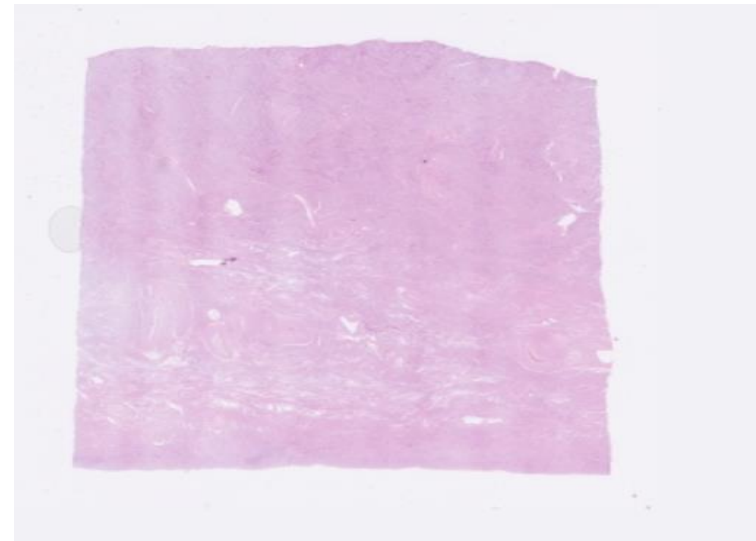
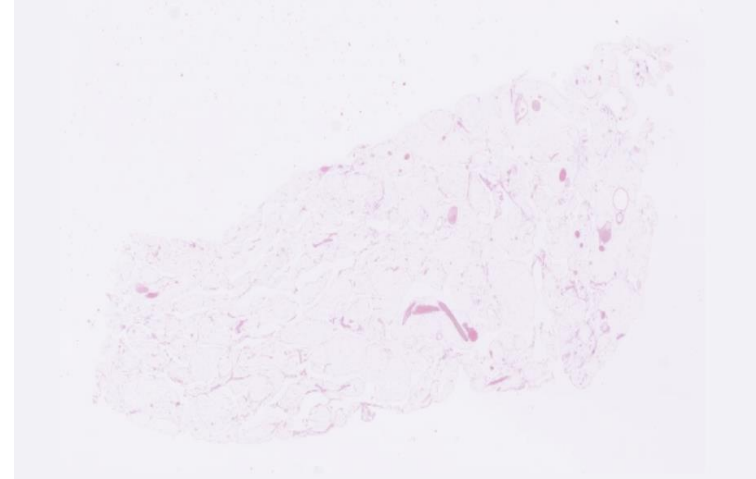




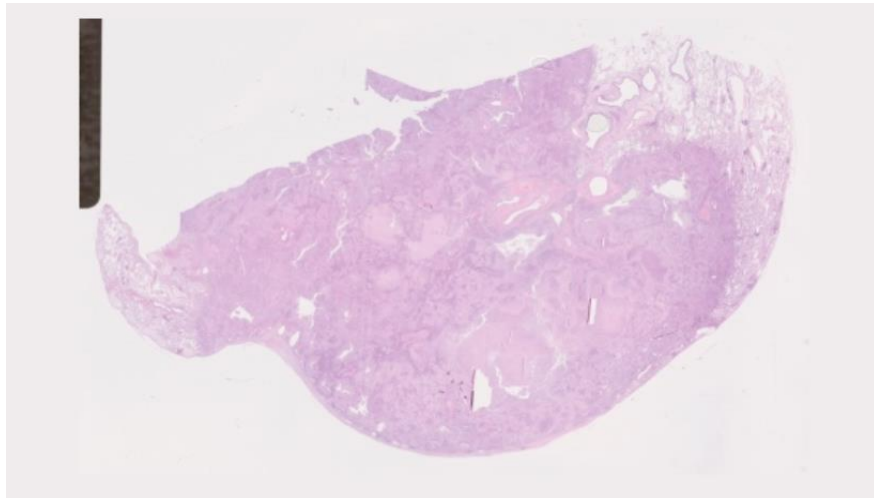
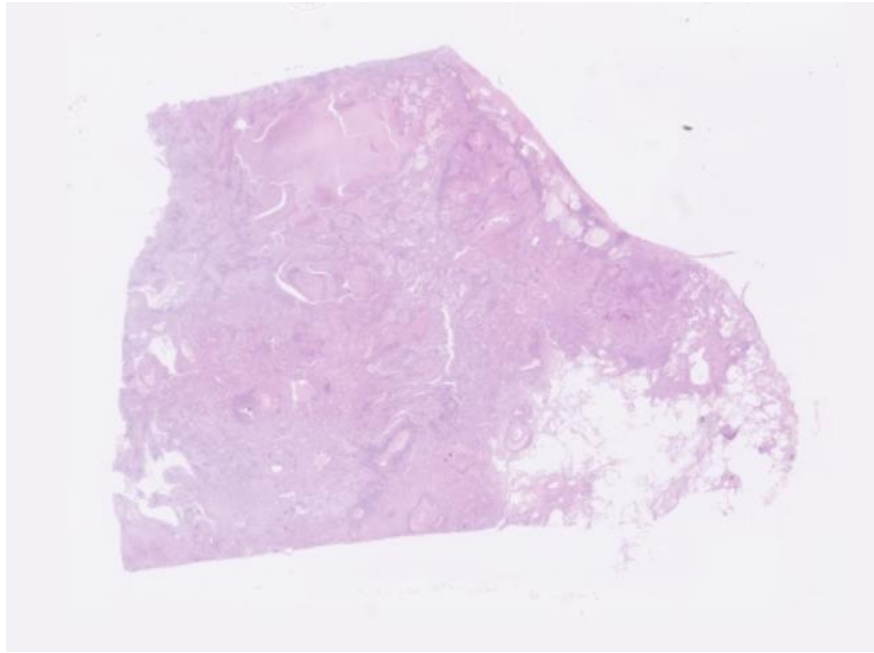
# DAKEWE



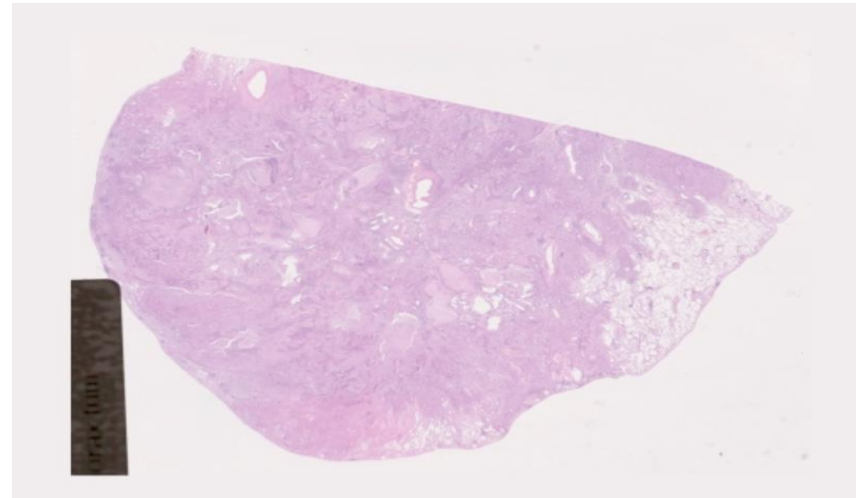
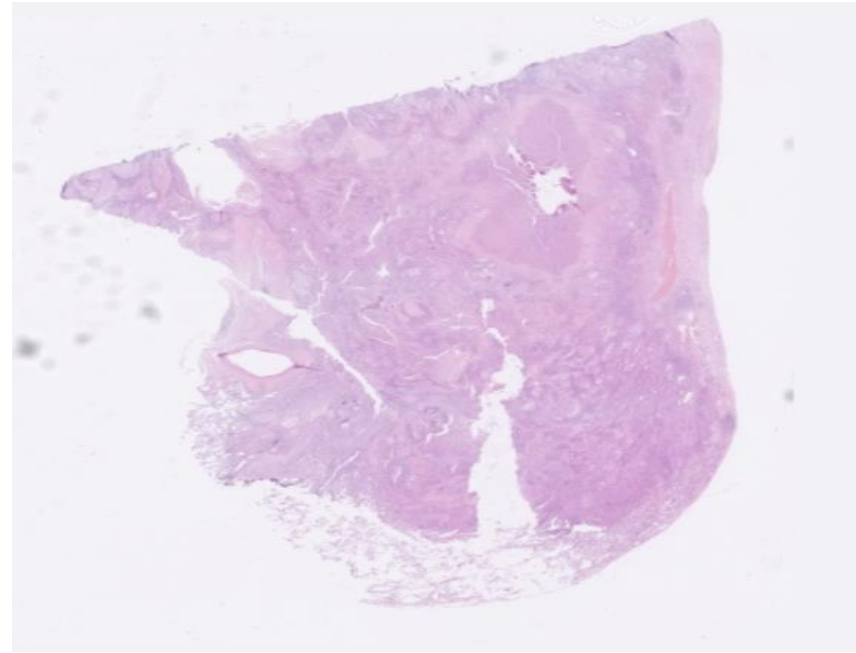
# VIP



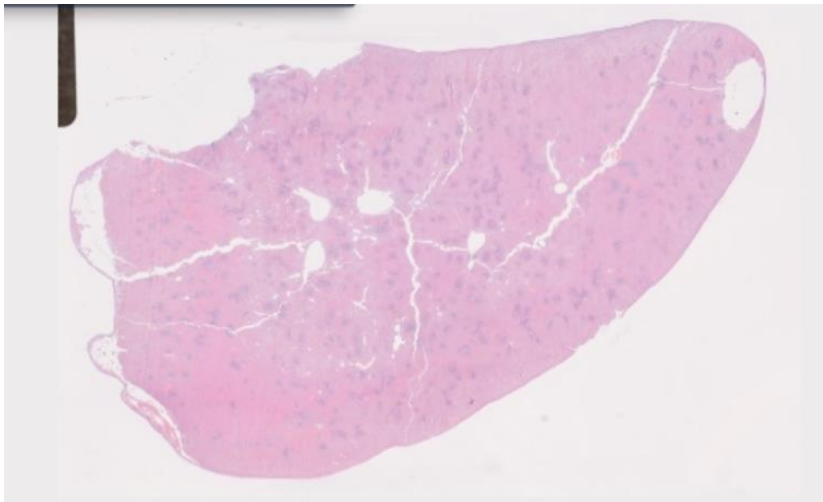
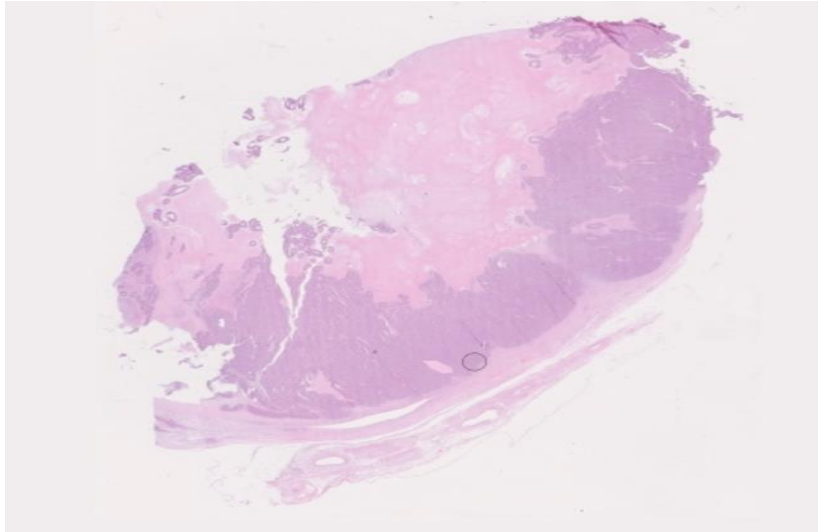
# DAKEWE



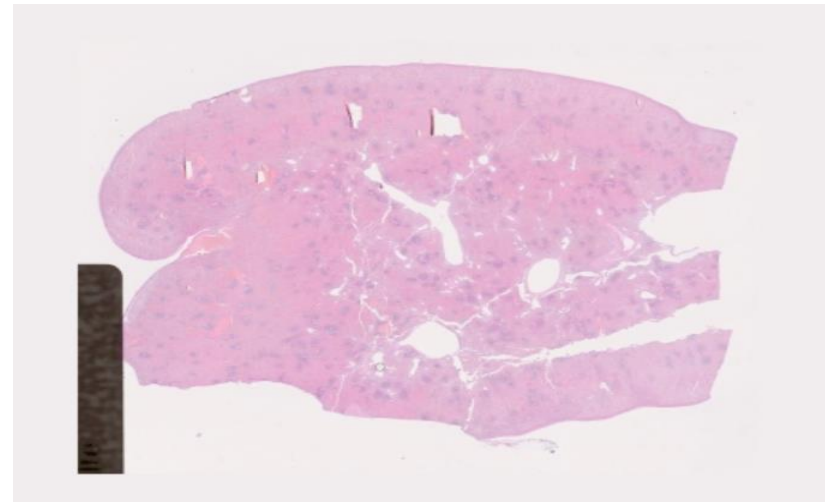
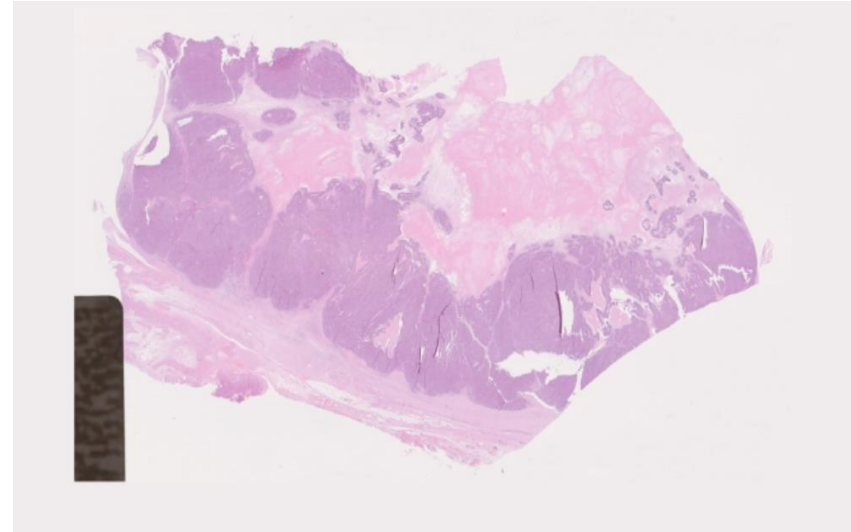
# VIP/DONATELLO



# DAKEWE



# DONATELLO



# DAKEWE



# DONATELLO



**THANK  
YOU  
FOR  
YOUR  
ATTENTION**