

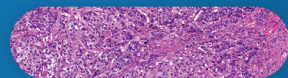
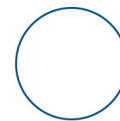
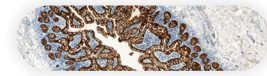
PANNORAMIC[®] 480 DX



Slide Capacity
UP to **480**

Scanning Speed
25 sec

Throughput/Hour
UP to **90** slides

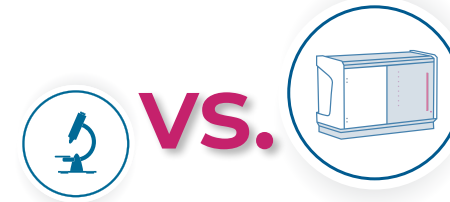


Integrated PANNORAMIC® Pathology Diagnostic System



The pathological diagnosis is of more pivotal importance today than ever. In addition to creating a clinical picture, the pathological diagnosis may determine the therapy plan of a patient and helps the doctor to monitor the treatment process.

3DHISTECH opens a new opportunity for their customers to improve their pathology workflow by using **a new, IVD-approved, comprehensive diagnostic solution** designed by one vendor.

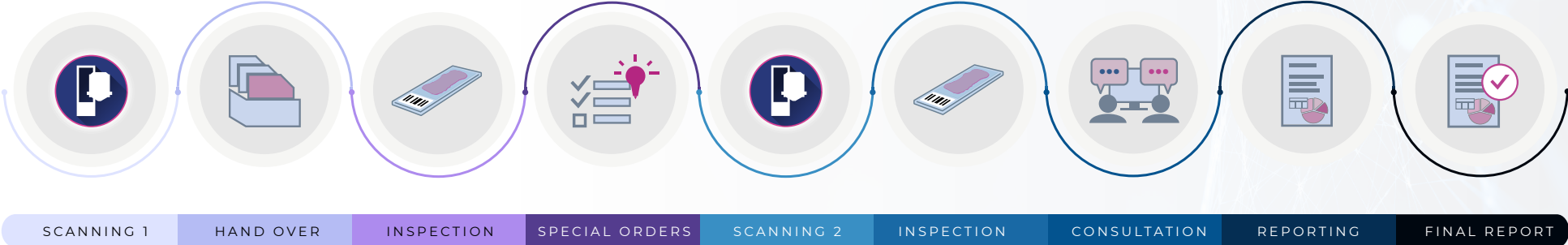


We always understand and respond to the customers' needs. The new **PANNORAMIC® 480 DX** offers a **versatile, high-quality, and high-speed scanning solution** for high-volume scanning.

Configurable rack panel to support single and double width slides parallel.

- **Integration to Pathology Information System**
- **User Management**
- **Server-based scanning mode**
- **AI-based Tissue Detection**
- **Fully Automated Digitized Process**
- **Scan to Slide Center Option**
- **Multiple Server Handling**

Accelerate your process with a reliable digitalized workflow!



Hospital Information System

Integrate to any Vendor

CaseManager DX

PANNORAMIC® 480 DX.

Key features:

- Capacity: **up to 480 slides**
- Speed: **25 sec/slide***
- Throughput: **up to 90 slides/hour***
- Image capture magnification: **40x / 80x** or **55x / 110x**
- Supported racks**: **3DH, Sakura***, Leica*****
- **Brightfield scanning**
- **Flash scanning** technology
- **Single- and double-width** slide scanning
- **Single- /multi- / extended** focus -layer scanning
- Scan **priority management**
- Flexibility: **arbitrary-order scanning**
- **MRXS or DICOM** output format
- **Automated tissue detection**
- **Multiple 1D and 2D barcode reading**
- Weight: **240 kg**
- Dimensions (WxDxH): **1200 mm x 902 mm x 1004 mm**



*40x magnification, 0.24 µm/pixel, 7500 µm focus point distance, 15x15 mm average sample size, single layer local scanning

**rack configuration should be defined upon order, affects slide capacity

*** Sakura 4768, Leica 14051252473

Note that PANNORAMIC® slide scanners, the PANNORAMIC® Diagnostic Scanner Software and 3DHISTECH's Integrated Pathology Diagnostic System are available as a package.
Important information for USA: For research and education use only, not for use in diagnostic procedures. This product has not been approved or cleared as a medical device by the U.S. Food and Drug Administration.

WWW.3DHISTECH.COM

3DHISTECH Kft.
H-1141 Budapest, Öv str. 3., Hungary
E-mail: info@3dhitech.com
Phone: +36-1-467-5600

Developed and produced by



3DHISTECH



Distributed by:
Axlab A/S
+45 35 43 18 81
axlab@axlab.dk
www.axlab.dk

Axlab

YOUR VISION.
OUR INSPIRATION