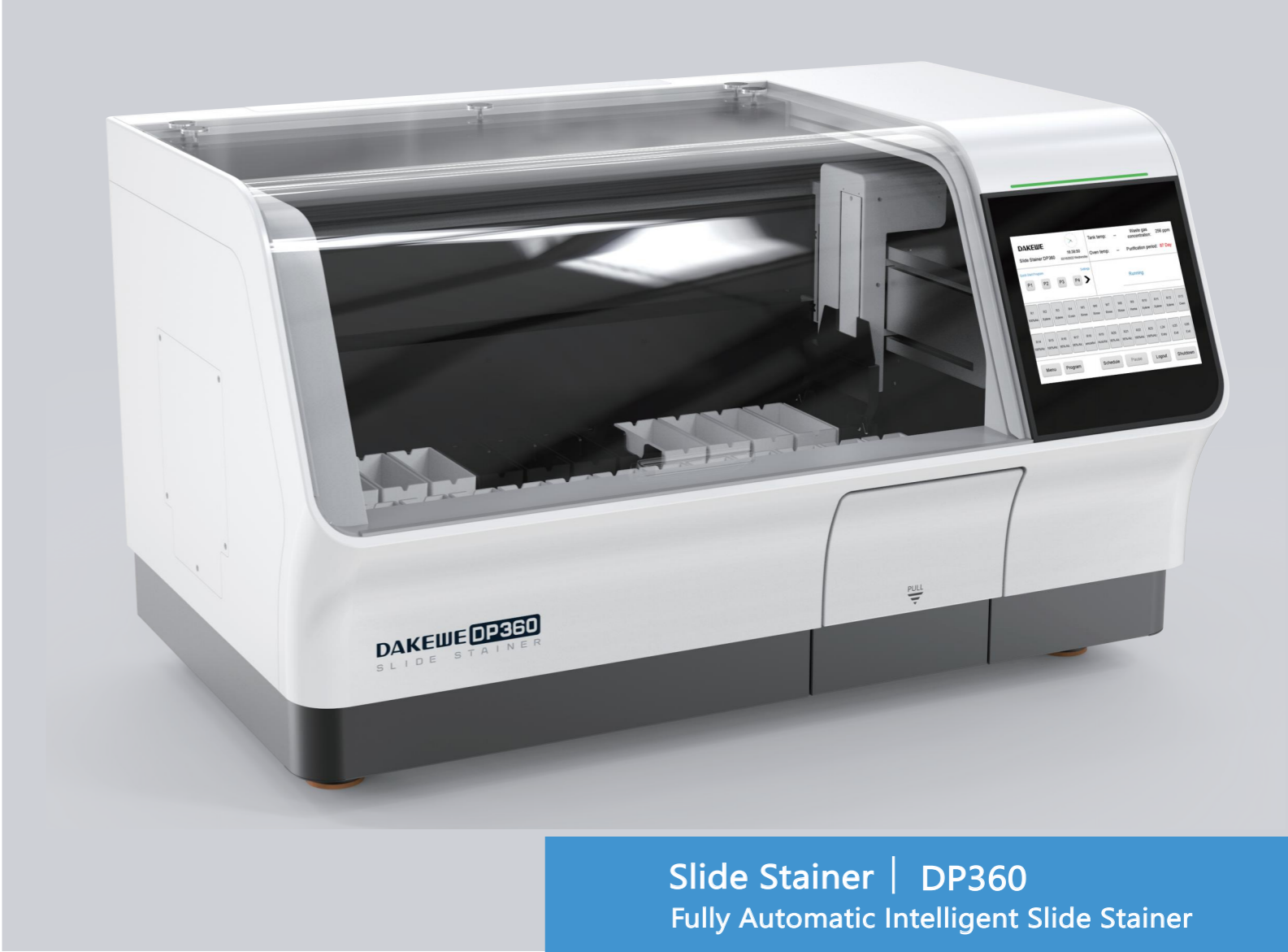


SUPERIOR QUALITY · EXCELLENT SERVICE



DP360 Technical Parameters	
Dimensions, unpacked (W x D x H)	1066 x 700 x 630 mm
Net Weight	approx. 130 kg
Power consumption	1200 VA
Supply voltage/ frequency	100 - 240 VAC 50/60 Hz
Operating temperature range	+15°C to +40°C
Total stations	26
Oven station and temperature	1; Max temperature 75°C
Reagent heating station	4; Max temperature 38°C
Water washing station	4
Reservoir volume	480 ml ± 20 ml
Program storage capacity	≥100 programs
Slide rack capacity	30 pcs
Throughput H/E	360 slides per hour



Slide Stainer | DP360
Fully Automatic Intelligent Slide Stainer



DAKEWE
Dakewe Medical
Shenzhen, China
www.dakewemedical.com



Distributed by:
Axlab A/S
+45 35 43 18 81
axlab@axlab.dk
www.axlab.dk

Axlab | YOUR VISION.
OUR INSPIRATION





Fully Automatic Intelligent Slide Stainer

Slide Stainer DP360 is a fully automatic intelligent stainer for routine histological and cytological Staining. It has stand-alone mode and online mode with CS500 glass coverslipper to form the integrated combo workstation. High throughput, fully automated staining process. Excellent quality control system and ready-to-use consumables and patented AAT system keeps each slide consistent.



Expertise in Quality Control Excellent Staining Effect

• Patented AAT system

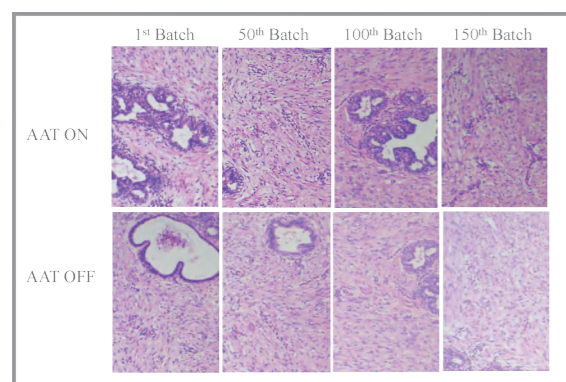
AAT technology keeps staining consistent. According to the specimen / numbers of staining rack and / or days of hematoxylin and eosin use, the soaking time will be gradually increased to achieve staining consistency. This system saves on the reagent cost.

• Reagent management-quality control

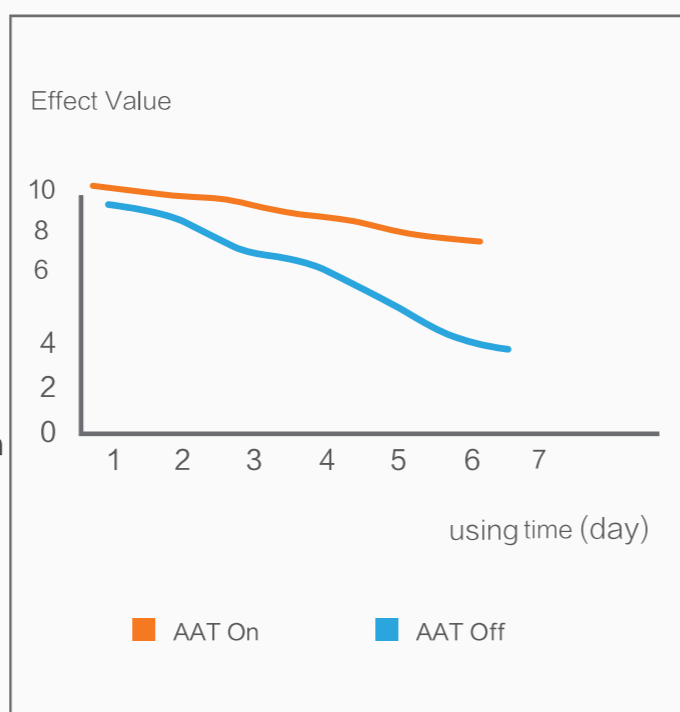
The Software controls the reagent management system. It allows the users to monitor reagent utilization and automatically generates a replacement reminder. This report enables effective traceability and management of staining quality and helps to reduce reagent costs.

• Reduce reagent carry over and cross contamination

The powerful robotic arm has the function of "leaching" and "shaking". The Slide Stainer can effectively reduce reagent carry over and limit cross contamination.



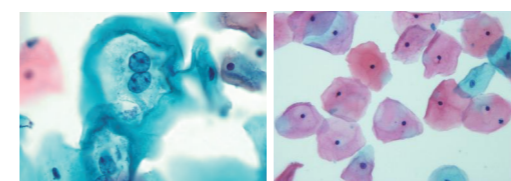
Staining consistency:
variation of Hematoxylin/ using time



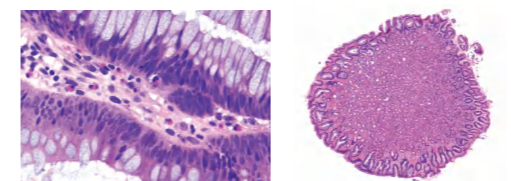
Flexibility

• Enter up to 100 protocols

2 Pre-programmed protocols : H/E staining, PAP Staining, different staining programs can run together.



PAP Staining



H&E Staining

• Flexible reagent solution

Optional exclusive ready-to-use reagent supplies for better results.

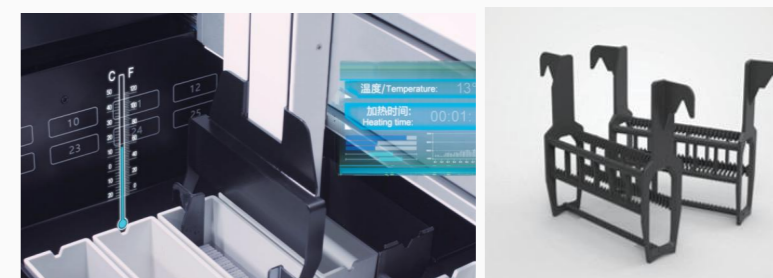


• Reagent heating station

The reagent can be slightly heated to eliminate the impact of climate differences and save reagent costs.

• Hydrophobic basket

Effectively avoid reagents from cross-contamination.





QC for Each Slide

Intelligent traceability is more accurate

- **Scientific management for reagents**

Reminder or forcible execution for reagents renewal.
Historical renewal records can be checked at any time.
Graphic reports of SOP can be exported directly.
Statistics of reagents consumption.

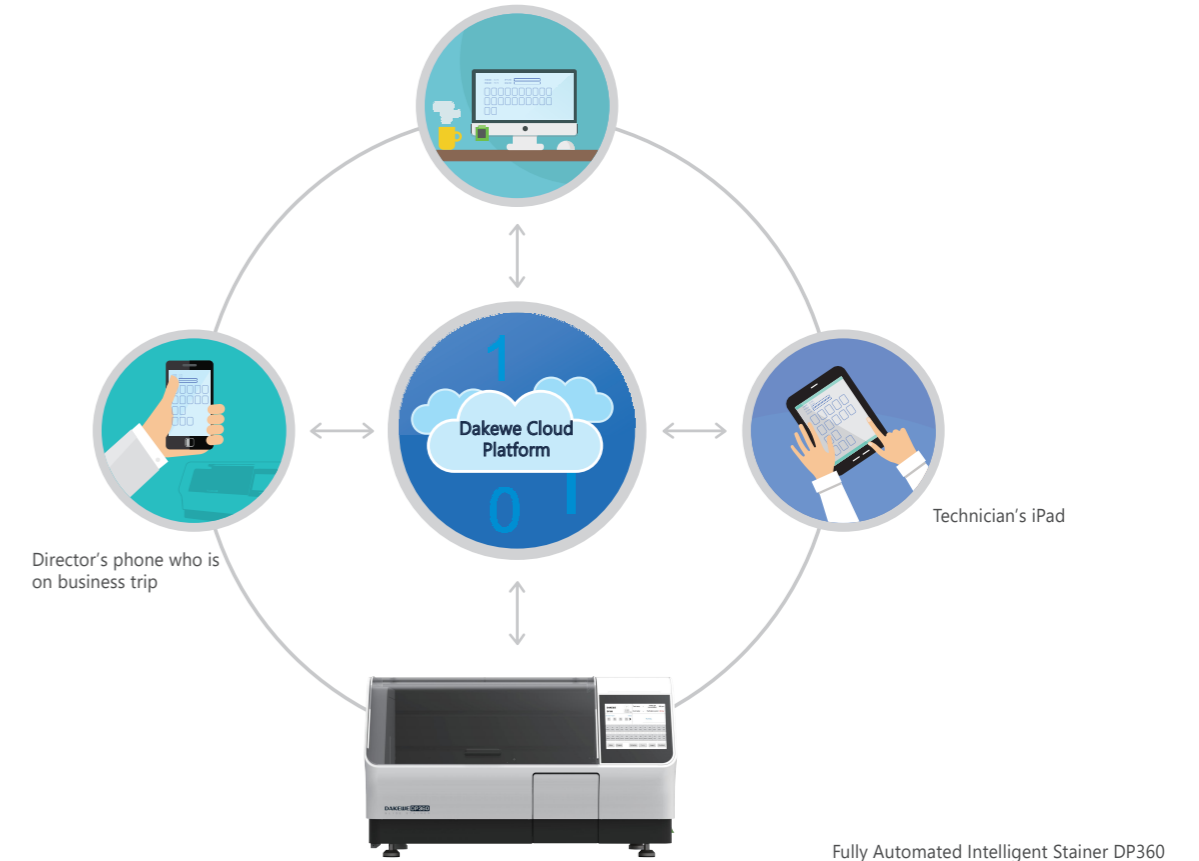
- **Human-computer interaction is intuitive**

Display indicates the status of the Stainer and coverslipper, the current reagent status and the amount of slides that have been completed.



- **Remote real-time monitoring, alarms and queries**

DAKEWE cloud remote monitoring system allows real-time monitoring of instrument status and remote warning (through webpage, email, SMS, and other ways), for effective management of equipment and enhanced tissue safety.



High Throughput High Efficiency

- **High speed robotic arm**

The robotic arm is quick and silent. Its vertical pulling speed can be as fast as 0.76 meter/second. It allows up to 11 slide racks to run at the same time. The staining time is always accurate.

- **High-throughput staining**

The innovative intelligent software algorithm is able to handle approximately 360 slides per hour (depending on the user protocols).



Safety and Ergonomic

- **Unique interaction**

25 cm (10.4 inch) color touch display, user-friendly software design, simple operation process.

- **Total safety**

The intelligent exhaust gas monitoring function ensures that fumes do not escape. The exhaust gas concentration sensor monitors in real-time to protect staff's health.

- **Various alarms**

Real-time voice, visual signals, text, and notification via application (through your smart phone, Laptops and iPad with DAKWE free download application) to provide an intelligent operating guide program.

